

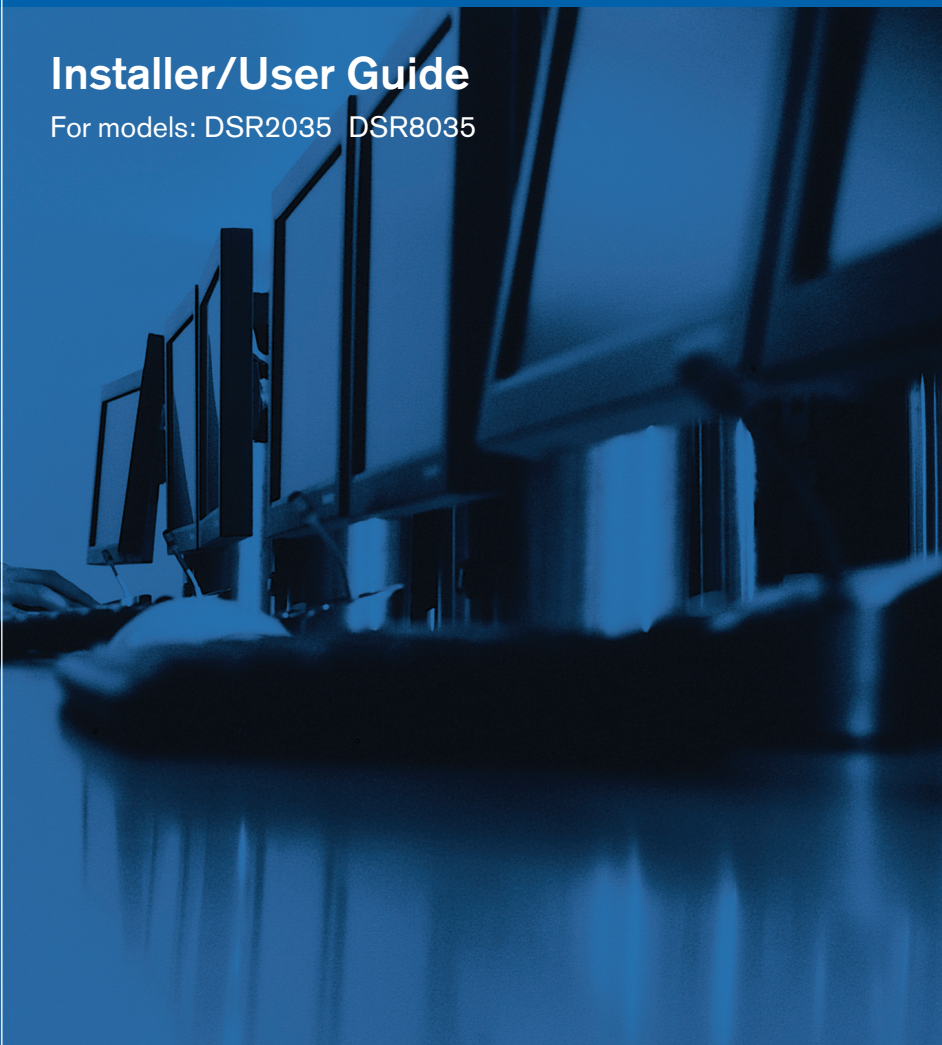


Avocent®

# DSR® Switch

## Installer/User Guide

For models: DSR2035 DSR8035



**INSTRUCTIONS**

This symbol is intended to alert the user to the presence of important operating and maintenance (servicing) instructions in the literature accompanying the appliance.

**DANGEROUS VOLTAGE**

This symbol is intended to alert the user to the presence of uninsulated dangerous voltage within the product's enclosure that may be of sufficient magnitude to constitute a risk of electric shock to persons.

**PROTECTIVE GROUNDING TERMINAL**

This symbol indicates a terminal which must be connected to earth ground prior to making any other connections to the equipment.



# **DSR<sup>®</sup> Switch**

## **Installer/User Guide**

**For models: DSR2035 and DSR8035**

Avocent, the Avocent logo, The Power of Being There, DSR, DSView, Dambrackas Video Compression, AVWorks and OSCAR are registered trademarks of Avocent Corporation or its affiliates. All other marks are the property of their respective owners.

© 2005 Avocent Corporation. All rights reserved. 590-535-501A.

## USA Notification

Warning: Changes or modifications to this unit not expressly approved by the party responsible for compliance could void the user's authority to operate the equipment.

Note: This equipment has been tested and found to comply with the limits for a Class A digital device, pursuant to Part 15 of the FCC Rules. These limits are designed to provide reasonable protection against harmful interference when the equipment is operated in a commercial environment. This equipment generates, uses and can radiate radio frequency energy and, if not installed and used in accordance with the instruction manual, may cause harmful interference to radio communications. Operation of this equipment in a residential area is likely to cause harmful interference, in which case the user will be required to correct the interference at his/her own expense.

## Canadian Notification

This Class A digital apparatus complies with Canadian ICES-003.

Cet appareil numérique de la classe A est conforme à la norme NMB-003 du Canada.

## Japanese Notification

この装置は、情報処理装置等電波障害自主規制協議会（VCCI）の基準に基づくクラスA情報技術装置です。この装置を家庭環境で使用すると電波妨害を引き起こすことがあります。この場合には使用者が適切な対策を講ずるよう要求されることがあります。

## Korean Notification

기종별	사용자 안내문
A급 기기 (업무용 정보통신기기)	이 기기는 업무용으로 전자파 적합등록을 한 기기이오니 판매자 또는 사용자는 이 점을 주의하시기 바라며 만약 잘못 판매 구입 하였을 때에는 가정용으로 교환하시기 바랍니다.

## Safety and EMC Approvals and Markings

UL, FCC, cUL, ICES-003, CE, GS, VCCI, MIC, C-Tick, GOST

# TABLE OF CONTENTS

<b>List of Figures .....</b>	<b>vii</b>
<b>List of Tables .....</b>	<b>ix</b>
<b>Chapter 1: Product Overview.....</b>	<b>1</b>
<i>Features and Benefits .....</i>	<i>1</i>
<i>Reduce cable bulk.....</i>	<i>2</i>
<i>Control of virtual media-capable appliances.....</i>	<i>2</i>
<i>Access the DSR2035/8035 switch via network connection.....</i>	<i>2</i>
<i>Simple access to any target device .....</i>	<i>2</i>
<i>Safety Precautions .....</i>	<i>4</i>
<i>Rack Mount Safety Considerations.....</i>	<i>4</i>
<b>Chapter 2: Installation .....</b>	<b>5</b>
<i>DSR Switch Connectivity.....</i>	<i>5</i>
<i>Installation overview .....</i>	<i>5</i>
<i>Setting up your network.....</i>	<i>8</i>
<i>Getting started.....</i>	<i>8</i>
<i>Connecting the DSR2035/8035 switch hardware.....</i>	<i>9</i>
<i>Verifying the Connections.....</i>	<i>11</i>
<i>DSR2035/8035 switch.....</i>	<i>11</i>
<i>DSRIQ modules .....</i>	<i>11</i>
<i>Configuring the Web Server and DSView 3 Software .....</i>	<i>11</i>
<i>Setting up the built-in web server .....</i>	<i>11</i>
<i>Setting up the DSView 3 software.....</i>	<i>12</i>
<i>Adjusting Mouse Settings on Target Devices .....</i>	<i>12</i>
<i>Microsoft Windows.....</i>	<i>12</i>
<i>LINUX.....</i>	<i>14</i>
<i>UNIX.....</i>	<i>17</i>
<i>Novell NetWare.....</i>	<i>19</i>
<i>Apple Mac OS.....</i>	<i>20</i>

<b>Chapter 3: Local Port Operation</b> .....	<b>21</b>
<i>Controlling Your System at the Local Port</i> .....	21
<i>Viewing and selecting ports and servers</i> .....	21
<i>Viewing the status of your DSR2035/8035 switching system</i> .....	23
<i>Navigating the OSCAR Interface</i> .....	25
<i>Configuring OSCAR Interface Menus</i> .....	26
<i>Setting virtual media options</i> .....	41
<i>Managing server tasks using the OSCAR interface</i> .....	42
<b>Chapter 4: Web Server Operations</b> .....	<b>49</b>
<i>Overview of the DSR2035/8035 Web Server</i> .....	49
<i>Viewing and Selecting Ports and Servers</i> .....	49
<i>About the DSR Explorer Window</i> .....	50
<i>Using the side navigation bar</i> .....	51
<i>Using the top option bar</i> .....	52
<i>Launching a KVM session</i> .....	53
<i>Managing a DSR web server device</i> .....	53
<i>Managing local accounts</i> .....	54
<i>Managing device properties</i> .....	55
<i>Power Controlling Target Devices</i> .....	56
<b>Chapter 5: The Video Viewer</b> .....	<b>59</b>
<i>About the Video Viewer Window</i> .....	59
<i>Video Viewer Minimum Requirements</i> .....	59
<i>Launching a KVM Session</i> .....	60
<i>Video Viewer Window Features</i> .....	61
<i>Changing the toolbar</i> .....	63
<i>Setting the window size</i> .....	63
<i>Adjusting the view</i> .....	64
<i>Adjusting color depth</i> .....	65
<i>Additional video adjustment</i> .....	66
<i>Adjusting mouse options</i> .....	69
<i>Using Keyboard Pass-through</i> .....	71
<i>Using Macros</i> .....	72
<i>Saving the View</i> .....	72
<i>Closing a Video Viewer Window Session</i> .....	73

---

<b>Chapter 6: Terminal Operations .....</b>	<b>75</b>
<i>The Console Menu .....</i>	<i>75</i>
<i>Network Configuration .....</i>	<i>75</i>
<i>Other Console Main Menu Options .....</i>	<i>77</i>
<i>Security configuration .....</i>	<i>77</i>
<i>Local user accounts .....</i>	<i>78</i>
<i>Console password .....</i>	<i>79</i>
<i>Reset certificates .....</i>	<i>79</i>
<i>Security mode .....</i>	<i>79</i>
<i>Firmware management .....</i>	<i>79</i>
<i>Enable debug messages .....</i>	<i>79</i>
<i>Restore factory defaults .....</i>	<i>80</i>
<i>Reset appliance .....</i>	<i>80</i>
<i>Exit .....</i>	<i>80</i>
<b>Appendices .....</b>	<b>81</b>
<i>Appendix A: FLASH Upgrades .....</i>	<i>81</i>
<i>Appendix B: Using DSView Software Over a Modem Connection .....</i>	<i>83</i>
<i>Appendix C: Using DSRIQ-SRL Modules .....</i>	<i>84</i>
<i>Appendix D: UTP Cabling .....</i>	<i>88</i>
<i>Appendix E: Technical Specifications .....</i>	<i>90</i>
<i>Appendix F: Sun Advanced Key Emulation .....</i>	<i>92</i>
<i>Appendix G: Technical Support .....</i>	<i>94</i>
<b>Index .....</b>	<b>95</b>





## LIST OF FIGURES

<i>Figure 1.1: Example DSR2035/8035 Switch Configuration</i> .....	3
<i>Figure 2.1: Basic DSR2035/8035 Switch Configuration (Showing the DSR8035 Model)</i> .....	7
<i>Figure 3.1: OSCAR Interface Main Dialog Box</i> .....	22
<i>Figure 3.2: OSCAR Interface Setup Dialog Box</i> .....	27
<i>Figure 3.3: OSCAR Interface Names Dialog Box</i> .....	28
<i>Figure 3.4: OSCAR Interface Name Modify Dialog Box</i> .....	29
<i>Figure 3.5: OSCAR Interface Devices Dialog Box</i> .....	30
<i>Figure 3.6: OSCAR Interface Device Modify Dialog Box</i> .....	31
<i>Figure 3.7: OSCAR Interface Menu Dialog Box</i> .....	32
<i>Figure 3.8: OSCAR Interface Flag Dialog Box</i> .....	33
<i>Figure 3.9: Position Flag</i> .....	34
<i>Figure 3.10: OSCAR Interface Broadcast Dialog Box</i> .....	35
<i>Figure 3.11: OSCAR Interface Scan Dialog Box</i> .....	36
<i>Figure 3.12: OSCAR Interface Commands Dialog Box</i> .....	37
<i>Figure 3.13: OSCAR Interface Screen Saver Dialog Box</i> .....	38
<i>Figure 3.14: OSCAR Interface Keyboard Dialog Box</i> .....	40
<i>Figure 3.15: OSCAR Interface Virtual Media Dialog Box</i> .....	42
<i>Figure 3.16: OSCAR Interface Commands Dialog Box</i> .....	43
<i>Figure 3.17: OSCAR Interface User Status Dialog Box</i> .....	44
<i>Figure 3.18: OSCAR Interface Disconnect Dialog Box</i> .....	44
<i>Figure 3.19: OSCAR Interface Version Dialog Box</i> .....	46
<i>Figure 3.20: DSRIQ Selection Dialog Box</i> .....	46
<i>Figure 3.21: DSRIQ Version Dialog Box</i> .....	47
<i>Figure 4.1: Avocent DSR Explorer Window</i> .....	50
<i>Figure 4.2: Side Navigation Bar</i> .....	51
<i>Figure 5.1: Video Viewer Window (Normal Window Mode)</i> .....	61
<i>Figure 5.2: Manual Video Adjust Dialog Box</i> .....	66
<i>Figure 5.3: Video Viewer Window with Local and Remote Cursors Displayed</i> .....	69
<i>Figure 6.1: Console Main Menu</i> .....	76
<i>Figure 6.2: Network Configuration Menu</i> .....	76



**LIST OF TABLES**

<i>Table 3.1: Main Dialog Box Functions</i> .....	22
<i>Table 3.2: OSCAR Interface Status Symbols</i> .....	23
<i>Table 3.3: OSCAR Interface Navigation Basics</i> .....	25
<i>Table 3.4: Setup Features to Configure the OSCAR Interface</i> .....	26
<i>Table 3.5: OSCAR Interface Status Flags</i> .....	33
<i>Table 3.6: Virtual Media Options</i> .....	41
<i>Table 3.7: Commands to Manage Routine Tasks for Your Target Devices</i> .....	42
<i>Table 4.1: DSR Explorer Window Area Descriptions</i> .....	51
<i>Table 4.2: Viewing Appliance Information</i> .....	55
<i>Table 5.1: Video Viewer Window Description</i> .....	62
<i>Table 5.2: Manual Video Adjust Dialog Box Descriptions</i> .....	67
<i>Table C.1: DSRIQ-SRL Module Pinouts</i> .....	87
<i>Table D.1: UTP Wiring Standards</i> .....	88
<i>Table E.1: DSR2035/8035 Switch Product Specifications</i> .....	90
<i>Table F.1: Sun Key Emulation</i> .....	92
<i>Table F.2: PS/2-to-USB Keyboard Mappings</i> .....	93



# *Product Overview*

## Features and Benefits

Avocent DSR<sup>®</sup> switches combine analog and digital technology to provide flexible, centralized control of data center servers and virtual media, and to facilitate the OA&M (operations, activation and maintenance) of remote branch offices where trained operators may be unavailable. They provide enterprise customers with a significant reduction of cable volume, secure remote access and flexible server management from anywhere at anytime.

Each DSR2035/8035 switch model consists of the following features:

- a rack mountable keyboard, video and mouse (KVM) switch, configurable for analog (local) or digital (remote) connectivity
- video resolutions supported up to 1280 x 1024 for remote users
- enhanced video quality of up to 1600 x 1200 available to local users via the video port
- user peripheral ports for PS/2 and USB keyboards and mice
- 2 SPC ports that can be used to connect to an SPC power control device
- virtual media capability accessed through any one of five USB ports
- accessibility to target devices across one of two 1000BaseT LAN ports that are used to establish dual Ethernet connections with the second Gigabit Ethernet port (LAN2) serving as a backup during a failover event on LAN1
- accessibility to target devices directly through a local port
- a MODEM port that supports V.34, V.90 or V.92-compatible modems that may be used to access the switch when an Ethernet connection is not available

The IP-based DSR2035/8035 switches give you flexible target device management control from anywhere in the world.

## Reduce cable bulk

With server densities continually increasing, cable bulk remains a major concern for network administrators. The DSR2035/8035 switches significantly reduce KVM cable volume in the rack by utilizing the innovative DSRIQ module and single, industry-standard Unshielded Twisted Pair (UTP) CAT 5 cabling. This allows a higher server density while providing greater airflow and cooling capacity.

The DSRIQ module is powered directly from the target device and provides Keep Alive functionality when the DSR2035/8035 switch is not powered.

The DSRIQ-SRL (serial) module is a DCE device that provides the primary interface between a serial device and a DSR2035/8035 switch. It provides VT100 terminal emulation, break suppression and port history in a compact, convenient module.

## Control of virtual media-capable appliances

The DSR2035/8035 switch allows you to view, move or copy data located on virtual media to and from any server. This feature allows you to manage remote systems more efficiently by allowing operating system installation, operating system recovery, hard drive recovery or duplication, BIOS updating and server backup.

Virtual media can be connected directly to the DSR2035/8035 switch using one of five USB ports located on the switch. In addition, virtual media may be connected to any remote workstation that is running DSView<sup>®</sup> management software and is connected to the DSR2035/8035 switch using an Ethernet connection.

---

**NOTE:** To open a virtual media session with a server, the server must first be connected to the switch using a virtual media capable DSRIQ module (USB2 or USB2L).

---

## Access the DSR2035/8035 switch via network connection

No special software or drivers are required on the attached, or client, computers.

---

**NOTE:** The client connects to the server housing the DSView management software using an Internet browser. For modem access, you must install DSR Remote Operations software included on the DSView software CD-ROM (see the *DSView Installer/User Guide* for more information).

---

Users access the DSR2035/8035 switch and all attached systems via Ethernet or using a V.34, V.90 or V.92 modem from a client computer, such as a PC. Clients can be located anywhere a valid network connection exists.

## Simple access to any target device

When a user accesses the DSView Server software, a listing of all target devices to which the user has permission to view and manage is displayed. When a user selects a target device from the list, the video of the selected target device is displayed in a Video Viewer window.

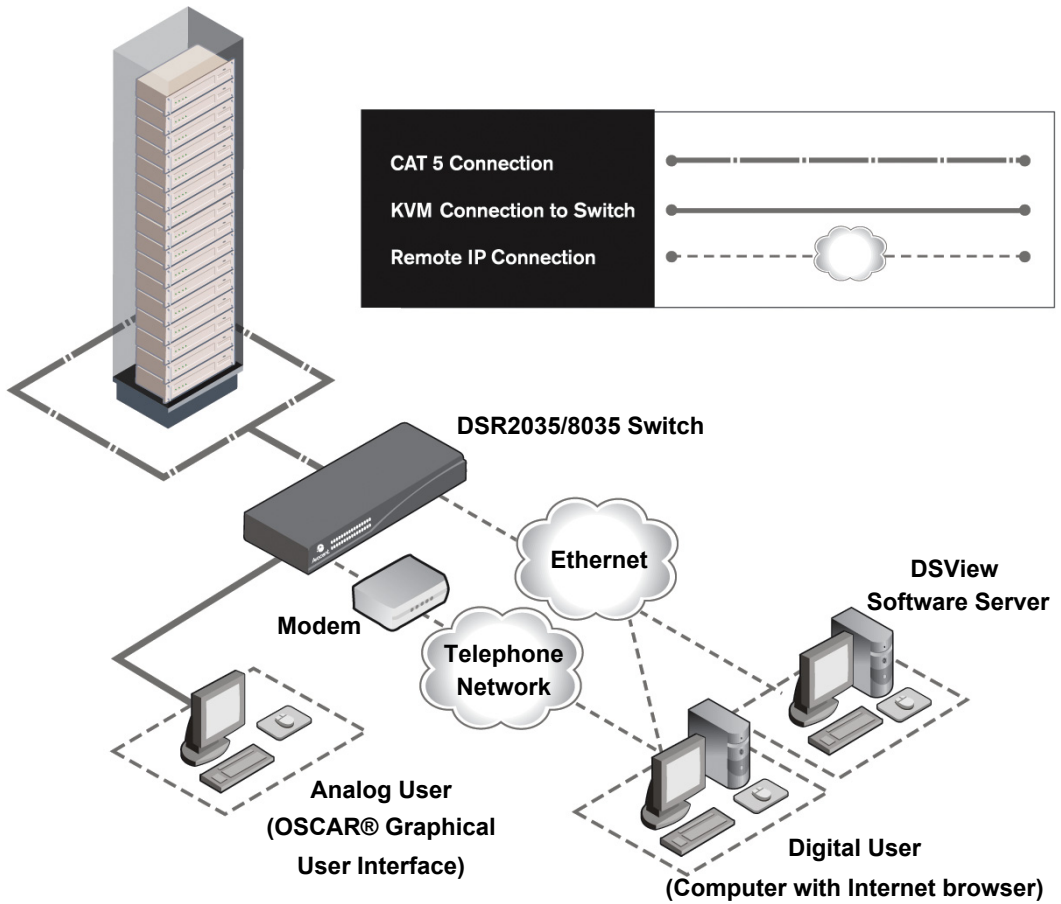


Figure 1.1: Example DSR2035/8035 Switch Configuration

## Safety Precautions

To avoid potential video and/or keyboard problems when using Avocent products:

- If the building has 3-phase AC power, ensure that the computer and monitor are on the same phase. For best results, they should be on the same circuit.

To avoid potentially fatal shock hazard and possible damage to equipment, please observe the following precautions:

- Do not use a 2-wire power cord in any Avocent product configuration.
- Test AC outlets at the target device and monitor for proper polarity and grounding.
- Use only with grounded outlets at both the target device and monitor. When using a backup Uninterruptible Power Supply (UPS), power the target device, the monitor and the DSR2035/8035 switch from the UPS.

---

**NOTE:** The AC inlet is the main power disconnect.

---

## Rack Mount Safety Considerations

- **Elevated Ambient Temperature:** If installed in a closed rack assembly, the operating temperature of the rack environment may be greater than room ambient. Use care not to exceed the rated maximum ambient temperature of the switch.
- **Reduced Air Flow:** Installation of the equipment in a rack should be such that the amount of airflow required for safe operation of the equipment is not compromised.
- **Mechanical Loading:** Mounting of the equipment in the rack should be such that a hazardous condition is not achieved due to uneven mechanical loading.
- **Circuit Overloading:** Consideration should be given to the connection of the equipment to the supply circuit and the effect that overloading of circuits might have on overcurrent protection and supply wiring. Consider equipment nameplate ratings for maximum current.
- **Reliable Earthing:** Reliable earthing of rack mounted equipment should be maintained. Pay particular attention to supply connections other than direct connections to the branch circuit (for example, use of power strips).



## **DSR Switch Connectivity**

The DSR2035/8035 switching system requires connectivity to a server running the DSView 3 software. DSView 3 software allows a user to view and control target devices (one at a time) attached to the DSR2035/8035 switching system. For more information on the DSView 3 software, see the *DSView Installer/User Guide*.

The DSR2035/8035 switching system transmits keyboard, video and mouse (KVM) information between operators and target devices attached to the DSR2035/8035 switch over a network using either an Ethernet connection or a modem connection.

The DSR2035/8035 switch uses TCP/IP for communication over Ethernet. Although 10BaseT Ethernet may be used, Avocent recommends a dedicated, switched 100BaseT network, or even a 1000BaseT network.

The DSR2035/8035 switch uses the Point-to-Point Protocol (PPP) for communication over a V.34, V.90 or V.92 modem. You can perform KVM switching tasks by using one of the following:

- the web server built into the switch
- DSView 3 software

### **Installation overview**

If you plan to use the DSView 3 software for access, please refer to the *DSView 3 Quick Install Guide* that is included with the DSView 3 software package.

The general procedure for setting up and installing the a DSR switch that has an on-board web server is as follows:

#### **Setting up your network for the on-board web server**

DSR switching systems that have the on-board web server use IP addresses to uniquely identify the switch and the target devices. The DSR switch supports both Dynamic Host Configuration Protocol (DHCP) and static IP addressing. Avocent recommends that IP addresses be reserved for each switch and that they remain static while the DSR switches are connected to the network. For additional information on setting up the DSR switch using the DSView 3 software, and for

information on how the DSR switch uses TCP/IP, see the *DSView Installer/User Guide* or DSView 3 Software Online Help.

### **Installing the DSR switch**

The general procedure for setting up and installing the DSR2035/8035 switch is as follows:

- Unpack the DSR2035/8035 switch and verify that all components are present and in good condition. See the *Getting started* section in this chapter.
- Make all hardware connections between the power source, DSR2035/8035 switch, target devices, optional SPC device, the Ethernet and the optional modem connection. See the *Connecting the DSR2035/8035 switch hardware* section.
- Turn on the power and verify that all connections are working. See the *Verifying the Connections* section.
- If you are configuring the DSR2035/8035 switch using the console menu interface, do that at this point. See Chapter 4 for more information.
- Use the DSView Server software to configure the DSR2035/8035 switch. See the *DSView Installer/User Guide* for detailed instructions.
- Make the appropriate mouse setting adjustments. See the *Adjusting Mouse Settings on Target Devices* section.

Figure 2.1 on page 7 illustrates a basic configuration for the DSR2035/8035 switch, using the DSR8035 switch as a model for the example.

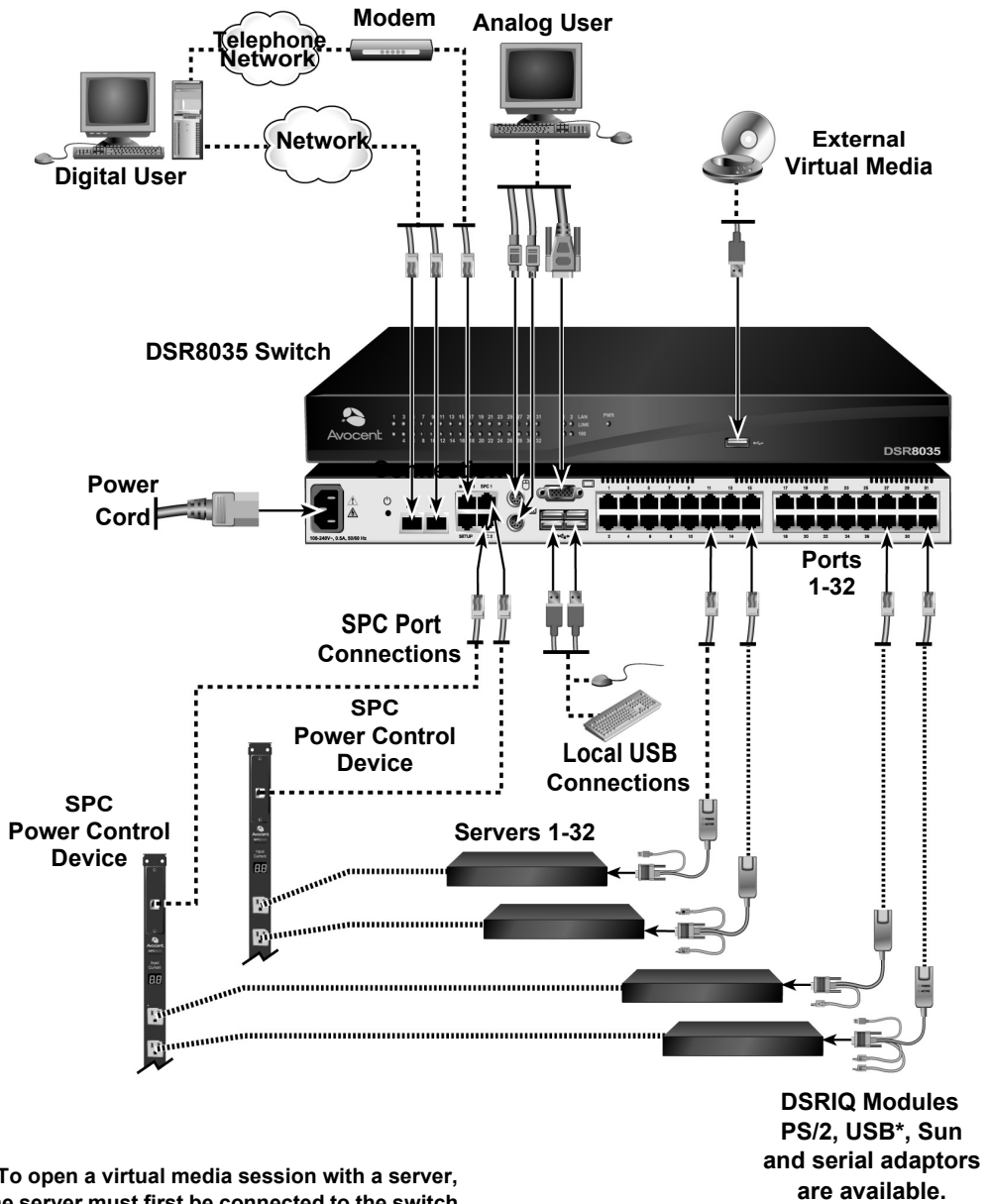


Figure 2.1: Basic DSR2035/8035 Switch Configuration (Showing the DSR8035 Model)

## Setting up your network

The DSR2035/8035 switching system uses IP addresses to uniquely identify the switch and the target devices. The DSR2035/8035 switch supports both Dynamic Host Configuration Protocol (DHCP) and static IP addressing. Avocent recommends that IP addresses be reserved for each switch and that they remain static while the DSR2035/8035 switches are connected to the network. For additional information on setting up the DSR2035/8035 switch using the DSView Server software, and for information on how the DSR2035/8035 switch uses TCP/IP, see the *DSView Installer/User Guide*.

## Getting started

Before installing your DSR2035/8035 switch, refer to the following lists to ensure you have all items that shipped with the DSR2035/8035 switch, as well as other items necessary for proper installation.

### Supplied with the DSR2035/8035 switch

- Local country power cord
- Rack mounting brackets
- Rack Mounting Bracket Quick Installation Guide
- Two ribbon cables with RJ-45 connectors at each end
- One RJ-45 to DB-9 (male) adaptor for the modem connection
- One RJ-45 to DB-9 (female) adaptor for the SETUP port
- DSR Installer/User Guide (this manual)
- DSR Quick Installation Guide

### Additional items needed

- One DSRIQ module per target server or DSRIQ-SRL module per serial device
- One CAT 5 patch cable per DSRIQ module (4-pair UTP, up to 10 meters)
- One CAT 5 patch cable for network connectivity (4-pair UTP, up to 10 meters)
- One USB2 or USB2L DSRIQ module per target server for virtual media sessions
- DSView 3 software
- (Optional) V.34, V.90 or V.92-compatible modem and cables
- (Optional) SPC power control device

---

## Connecting the DSR2035/8035 switch hardware

---

**NOTE:** The DSR2035/8035 switch may be rack mounted in a 1U configuration. The DSR2035/8035 switch does not support a 0U configuration.

---

### To connect and power up your DSR2035/8035 switch:

1. Power down the target device(s) that will be part of your DSR2035/8035 switching system. Locate the power cord that came with the DSR2035/8035 switch. Plug one end into the power socket on the rear of the DSR2035/8035 switch. Plug the other end into an appropriate AC wall outlet.



---

**WARNING: To reduce the risk of electric shock or damage to your equipment:**

- Do not disable the power cord grounding plug. The grounding plug is an important safety feature.
  - Plug the power cord into a grounded (earthed) outlet that is easily accessible at all times.
  - Disconnect the power from the switch by unplugging the power cord from either the electrical outlet or the appliance.
- 

2. Plug your VGA monitor and either PS/2 or USB keyboard and mouse cables into the appropriately labeled DSR2035/8035 switch ports. You must install both a keyboard and mouse on the local ports or the keyboard will not initialize properly.
3. Choose an available numbered port on the rear of your DSR2035/8035 switch. Plug one end of a CAT 5 patch cable (4-pair, up to 10 meters) into the selected port and plug the other end into the RJ-45 connector of a DSRIQ module.
4. Plug the DSRIQ module into the appropriate ports on the back of the target server. Repeat this procedure for all servers that are to be connected to the DSR2035/8035 switch. See *To connect a DSRIQ module to a server* and *To connect a DSRIQ module to a serial device* for more information.
5. Plug a CAT 5 patch cable from your Ethernet network into the LAN1 port on the back of your DSR2035/8035 switch. Network users will access the DSR2035/8035 switch through this port.
6. (Optional) The DSR2035/8035 switch can also be accessed using a ITU V.92, V.90 or V.34-compatible modem. Plug one end of one of the the included ribbon cables into the MODEM port on the back of your DSR2035/8035 switch. Plug the other end into the RJ-45 to DB-9 adaptor (male), and plug the adaptor into the connector on the modem.

---

**NOTE:** Using a modem connection instead of a LAN connection will limit the performance capability of your DSR2035/8035 switch.

---

7. (Optional) Plug one end of the cable supplied with the SPC power control device into the SPC 1 port on the DSR2035/8035 switch and plug the other end into an SPC device. Plug the power cords from the target servers into the SPC device power outlets. Plug the SPC device into a grounded AC wall outlet. Repeat this step for the SPC 2 port if fail-over capability is desired.

8. (Optional) To configure the DSR2035/8035 switch using the console menu interface, use the second supplied ribbon cable and RJ-45 to DB9 (female) adaptor to connect a terminal or a PC that is running terminal emulation software (such as HyperTerminal<sup>®</sup>) to the SETUP port on the back panel of the DSR2035/8035 switch. The terminal should be set to 9600 bits per second (bps), 8 bits, 1 stop bit, no parity and no flow control. Otherwise, proceed to the next step.
9. Power up each target device and then power up the DSR2035/8035 switch. After approximately one minute, the switch completes initialization and displays the OSCAR<sup>®</sup> graphical user interface *Free* tag on the local port monitor.
10. Use the DSView 3 software to configure the switch. See the *DSView Installer/User Guide* for detailed instructions.

**To connect a DSRIQ module to a server:**

1. Attach the color-coded connectors of a DSRIQ module to the corresponding keyboard, monitor and mouse ports on the server you will be connecting to this DSR2035/8035 switch.
2. Attach one end of the CAT 5 patch cable to the RJ-45 connector on the DSRIQ module. Connect the other end of the CAT 5 patch cable to the desired port on the back of your DSR2035/8035 switch.

Repeat this procedure for all servers you wish to attach.

---

**NOTE:** When connecting a Sun DSRIQ module, you must use a multi-sync monitor in the local port to accommodate Sun computers that support both VGA and sync-on-green or composite sync.

---

**To connect local virtual media:**

Connect the virtual media to any one of the five USB ports on the DSR2035/8035 switch.

---

**NOTE:** For all virtual media sessions, you must use a USB2 or USB2L DSRIQ module.

---

**To connect a DSRIQ module to a serial device:**

1. Attach the DSRIQ-SRL module 9-pin serial connector to the serial port of the device to be connected to your DSR2035/8035 switch.
2. Attach one end of the CAT 5 patch cable to the RJ-45 connector on the DSRIQ-SRL module. Connect the other end of the CAT 5 patch cable to the desired port on the back of your DSR2035/8035 switch.

---

**NOTE:** The DSRIQ-SRL module is a DCE device and only supports VT100 terminal emulation.

---

3. Connect the power supply to the power connector on your DSRIQ-SRL module. The cable expander can be used to power up to four DSRIQ-SRL modules from a single power supply.
4. Connect the DSRIQ-SRL module power supply to a grounded AC wall outlet. Power up your serial device. See *Appendix C on page 84* for more information on DSRIQ-SRL modules.

## Verifying the Connections

### DSR2035/8035 switch

The front panel of the DSR2035/8035 switch features LEDs indicating the Ethernet connection for both LAN1 and LAN2:

- The green LED, labeled *Link*, illuminates when a valid connection to the network is established at a rate of 1000 Mbps and blinks when there is activity on the port.
- The amber LED illuminates when you are communicating at a rate of 100 Mbps when using an Ethernet connection.
- If neither LED is illuminated, connection speed is at a rate of 10 Mbps.

Additionally, the front panel of the DSR2035/8035 switch has LEDs for each port that indicate the target device status:

- A green LED illuminates when the attached target device has power.
- An amber LED illuminates when that port is selected.
- The LEDs blink during a firmware upgrade.

### DSRIQ modules

---

**NOTE:** PS/2, Sun, USB, USB2 and USB2L DSRIQ modules are available for attaching servers to your DSR switch. If your DSR switch supports virtual media, connect virtual media devices to a workstation using USB2 and USB2L DSRIQ modules.

---

Use the DSRIQ-SRL serial module to connect serial devices to the DSR2035/8035 switch. The DSRIQ-SRL module features two green LEDs: a *POWER* LED and a *STATUS* LED.

- The *POWER* LED indicates that the attached DSRIQ-SRL module is powered.
- The *STATUS* LED indicates that a valid selection has been made to a DSR2035/8035 switch.

The DSRIQ-SRL module prevents a serial break from the attached device if the module loses power. However, a user can generate a serial break with the attached device by pressing **Alt-B** after accessing the Terminal Applications menu.

## Configuring the Web Server and DSView 3 Software

Because the DSR2035/8035 switch has an on-board web server, you must configure the web server and install the DSView 3 software.

### Setting up the built-in web server

You can access the DSR2035/8035 switch via an embedded web server that handles most day-to-day switching tasks. Before using the web server to access the switch, first specify an IP address

through the SETUP port on the back panel of the switch. See Chapter 6 for detailed instructions on how to use the SETUP port and web server to configure the switch.

## Setting up the DSView 3 software

See the *DSView Installer/User Guide* that ships with your software, or refer to the DSView 3 Software Online Help.

## Adjusting Mouse Settings on Target Devices

Before a computer connected to the DSR2035/8035 switch can be used for remote user control, you must set the target mouse speed and turn off acceleration. For machines running Microsoft® Windows® (Windows NT®, 2000, XP, Server 2003), use the default PS/2 mouse driver.

To ensure that the local mouse movement and remote cursor display remain in sync, mouse acceleration needs to be set to “none” for all user accounts accessing a remote system using a KVM switch. Mouse acceleration should also be set to “none” on every remote system. Special cursors should not be used and cursor visibility options, such as pointer trails, **Ctrl** key cursor location animations, cursor shadowing and cursor hiding should also be turned off.

This section explains the steps for setting mouse movement and cursor features for use with Avocent hardware products and DSView® management software with the following operating systems:

- Microsoft® Windows® NT 4.0, 2000, XP, Server 2003 and IntelliPoint® drivers
- LINUX® Red Hat® (pre-8.0, 8.0 and later, and Enterprise) and SUSE®
- UNIX® Sun Solaris® (versions 9 and 10)
- Novell® NetWare®
- Apple® MAC® OS 10.3 and later

---

**NOTE:** If you are not able to disable mouse acceleration from within your operating system, or if you do not desire to adjust the settings of all your servers, newer versions of the DSView 3 software include the Tools - Single Cursor Mode command available in the Video Viewer window. This command places the Video Viewer window into an “invisible mouse” mode which allows you to manually toggle control between the mouse pointer on the target system being viewed and the mouse pointer on the client running DSView 3 software.

---

## Microsoft Windows

---

**NOTE:** Avocent highly recommends that all Microsoft® Windows systems attached to the DS1800 digital switch, DSR switches, CCM console management appliances and SwitchView IP remote access devices use the default Windows PS/2 mouse driver.

---

### To adjust the mouse speed and pointer settings for NT 4.0 (using default drivers):

1. From the Desktop taskbar, select *Start - Settings - Control Panel* to open the Control Panel.
2. In the Control Panel, double-click the *Mouse* icon to open the Mouse Properties dialog box.



3. Click the *Motion* tab.
4. Set the Pointer speed slider to *Slow* (the leftmost tick mark).
5. Make sure the Snap to default checkbox is cleared.
6. Click *OK* to save your settings and to close the Mouse Properties dialog box.
7. Resynchronize the mouse in the software remote session window for the Avocent management software you are using:
  - If you are using DSView software version 2.x or earlier, click *Mouse Align*.
  - If you are using DSView software version 3.0 or later, click *Align Local Cursor*.
  - If you are using the AVWorks<sup>®</sup> cross-platform management application, click *Screen Refresh*.

The mouse resynchronizes and should work properly.

**To adjust the mouse speed and pointer settings for Windows 2000 (using default drivers):**

1. From the Desktop taskbar, select *Start - Settings - Control Panel* to open the Control Panel.
2. From the Control Panel, double-click the *Mouse* icon to open the Mouse Properties dialog box.
3. Click the *Motion* tab.
4. Set the Speed slider to the default of 50% (the sixth tick mark from the left).
5. Set the Acceleration option to *None*.
6. Make sure the Snap to default checkbox is cleared.
7. Click *OK* to save your settings and to close the Mouse Properties dialog box.
8. Resynchronize the mouse in the software remote session window for the Avocent management software you are using:
  - If you are using DSView software version 2.x or earlier, click *Mouse Align*.
  - If you are using DSView software version 3.0 or later, click *Align Local Cursor*.
  - If you are using the AVWorks software, click *Screen Refresh*.

The mouse resynchronizes and should work properly.

**To adjust the mouse speed and pointer settings for Windows XP or Windows Server 2003 (using default drivers):**

1. From the Desktop taskbar, select *Start - Control Panel* to open the Control Panel.
2. From the Control Panel, double-click the *Mouse* icon to open the Mouse Properties dialog box.
3. Click the *Pointer Options* tab.
4. Set the Select a pointer speed slider to the default of midpoint (the fifth tick mark from the left).
5. Clear the Enhance pointer precision checkbox.
6. Make sure the Snap To and the Visibility checkboxes are cleared.

7. Click *OK* to save your settings and to close the Mouse Properties dialog box.
8. Resynchronize the mouse in the software remote session window for the Avocent management software you are using:
  - If you are using DSView software version 2.x or earlier, click *Mouse Align*.
  - If you are using DSView software version 3.0 or later, click *Align Local Cursor*.
  - If you are using the AVWorks software, click *Screen Refresh*.

The mouse resynchronizes and should work properly.

**To adjust the mouse speed and pointer settings for IntelliPoint drivers:**

1. From the Desktop taskbar, select *Start - Control Panel* to open the Control Panel.
2. From the Control Panel, double-click the *Mouse* icon to open the Mouse Properties dialog box.
3. Click the *Pointer Options* tab.
4. Set the Select a pointer speed slider to the default of midpoint (the fifth tick mark from the left).
5. Clear the Enhance pointer precision checkbox.
6. Make sure the Snap To and the Visibility checkboxes are cleared.
7. Click the *Wheel* tab.
8. Clear the Enable accelerated scrolling ... checkbox.
9. Click *OK* to save your settings and to close the Mouse Properties dialog box.
10. Resynchronize the mouse in the software remote session window for the Avocent management software you are using:
  - If you are using DSView software version 2.x or earlier, click *Mouse Align*.
  - If you are using DSView software version 3.0 or later, click *Align Local Cursor*.
  - If you are using the AVWorks software, click *Screen Refresh*.

The mouse resynchronizes and should work properly.

## LINUX

---

**NOTE:** Red Hat and SUSE support several standard graphical user interfaces. For this document, the Red Hat-modified version of the GNOME graphical interface is shown, and the SUSE-modified version of the KDE interface is shown. If your Red Hat installation uses the KDE graphical user interface, see the SUSE section or refer to the KDE documentation online. If your SUSE installation uses the GNOME interface, refer to the Red Hat section or refer to the GNOME documentation online.

---

**To adjust the mouse speed and pointer settings for Red Hat LINUX pre-8.0 drivers (modified GNOME GUI):**

1. From the Workspace Menu, click the *Desktop Manager* icon and select *Application Manager - Desktop\_Controls* to open the Control Center dialog box.
2. From the tree view, select *Peripherals - Mouse* to list the mouse settings.

3. Set the Acceleration slider to the center position.
4. (Optional) Select the desired Mouse buttons option and set the Threshold slider to the desired position.
5. Click *OK* to save your settings and to close the Control Center dialog box.
6. Resynchronize the mouse in the software remote session window for the Avocent management software you are using.
  - If you are using DSView software version 2.x or earlier, click *Mouse Align*.
  - If you are using DSView software version 3.0 or later, click *Align Local Cursor*.
  - If you are using the AVWorks software, click *Screen Refresh*.

The mouse resynchronizes and should work properly.

### **To adjust the mouse speed and pointer settings for Red Hat LINUX 8.0 and later drivers:**

1. Click the *Red Hat* icon.
2. Select *Preferences - Mouse* to open the Mouse Preferences dialog box.
3. Click the *Motion* tab.
4. Set the Acceleration slider slightly left of the center position.

---

**NOTE:** The sliders in Red Hat LINUX versions 8 and above do not contain numbers or tick marks. Proper alignment may be achieved only by trial and error.

---

5. (Optional) Set the Sensitivity and Threshold sliders to the desired positions.
6. Click *Close* to save your settings and to close the Mouse Preferences dialog box.
7. Resynchronize the mouse in the software remote session window for the Avocent management software you are using.
  - If you are using DSView software version 2.x or earlier, click *Mouse Align*.
  - If you are using DSView software version 3.0 or later, click *Align Local Cursor*.
  - If you are using the AVWorks software, click *Screen Refresh*.
8. Test the mouse motion in the Video Viewer window.
9. If necessary, repeat steps 4 to 8 until the mouse is properly aligned.

### **To adjust the mouse speed and pointer settings for Red Hat Enterprise LINUX drivers:**

There are two ways to open the Mouse dialog box:

- To open the Mouse dialog box using a menu, go to step 1.
  - To open the Mouse dialog box using icons, go to 4.
1. Click the *Main Menu* icon.
  2. Select *Programs - Settings - Peripherals - Mouse* to open the Mouse dialog box.
  3. Go to step 8 on page 16.

4. Click the *Start Here* icon to open the Start Here dialog box.
5. Click the *Preferences* icon to open the Control Center dialog box.
6. Click the *Peripherals* icon to open the Peripherals dialog box.
7. Click the *Mouse* icon to open the Mouse dialog box.
8. Set the Acceleration slider to the middle position.
9. (Optional) Select the desired Mouse buttons option and set the Threshold slider to the desired position.
10. Click *OK* to save your settings and to close the Mouse dialog box.
11. Resynchronize the mouse in the software remote session window for the Avocent management software you are using.
  - If you are using DSView software version 2.x or earlier, click *Mouse Align*.
  - If you are using DSView software version 3.0 or later, click *Align Local Cursor*.
  - If you are using the AVWorks software, click *Screen Refresh*.

The mouse resynchronizes and should work properly.

#### **To adjust the mouse speed and pointer settings for SUSE LINUX drivers:**

1. Click the *SUSE* icon and select the *Control Center* menu option. (By default, SUSE uses a modified version of the KDE graphical user interface.)
2. Click anywhere in the screen area to open the Behavior (first time use default) - Control Center window where you clicked.
3. If the Index side navigation bar is shown in tree view, click the plus symbol (+) next to Peripherals to display the submenu items. Otherwise, select *Peripherals*.
4. Select the *Mouse* option to display the Mouse - Control Center dialog box.
5. Click the *Advanced* tab.
6. Set the Pointer acceleration slider to the leftmost position (1.0x).
7. (Optional) Set the Pointer threshold, Double click interval, Drag start time, Drag start distance and Mouse wheel scrolls by sliders to the desired positions.
8. If necessary, click *Defaults* to restore the default settings.
9. Click *Apply* to save your settings.
10. Click the *X* button in the upper-right corner to close the Mouse - Control Center dialog box.
11. Resynchronize the mouse in the software remote session window for the Avocent management software you are using:
  - If you are using DSView 2.x or earlier software, click *Mouse Align*.
  - If you are using DSView 3.0 or later software, click *Align Local Cursor*.
  - If you are using the AVWorks software, click *Screen Refresh*.

The mouse resynchronizes and should work properly.

## UNIX

### To adjust the mouse speed and pointer settings for Sun Solaris v9 drivers:

---

**NOTE:** To use a Sun Solaris driver with the DSView software and DSR switch, you must have the following versions of DSView software on your host system and DSR switch firmware:

- DSView software version 2.x and earlier - DS Management Software suite version 1.0.9.202 or later
  - DSR switch with DSView software version 2.x and earlier - Firmware version 1.0.0.106 to 2.x
  - DSR switch with DSView software 3.0 and later - Firmware version 3.0 or later
- 

1. From the Workspace Menu, select *Desktop Manager* and go to 3.  
- or -  
Click on the tab above the Text Note control and select *Applications* to open the Application Manager window.
2. Click the *Desktop\_Controls* icon to open the Application Manager - Desktop\_Controls window.
3. Double-click the *Mouse Style Manager* icon to open the Style Manager toolbar and Style Manager - Mouse dialog box.
4. In the Style Manager - Mouse dialog box, set the Acceleration slider to 1.0.
5. (Optional) Select the desired Handedness and Button 2 options and set the Double-Click and the Threshold sliders to the desired positions. Test the double-click speed by double-clicking on the mouse icon.
6. Click *OK* to save your settings and to close the dialog box.
7. If you are using DSView or AVWorks software, select *Video - Scaling - Auto Scale* in any active remote session window.
8. Set the mouse scaling to normal by performing the following actions:
  - a. From the Video Viewer menu, select *Tools - Session Options* to open the Session Options dialog box.
  - b. Click the *Mouse* tab.
  - c. In the Mouse Scaling area, select the *Default* radio button.
  - d. Click *OK* to save your settings and to close the Session Options dialog box.
9. Resynchronize the mouse in the software remote session window for the Avocent management software you are using:
  - If you are using DSView software version 2.x or earlier, click *Mouse Align*.
  - If you are using DSView software version 3.0 or later, click *Align Local Cursor*.
  - If you are using the AVWorks software, click *Screen Refresh*.

The mouse resynchronizes and should work properly.

**To adjust the mouse speed and pointer settings for Sun Solaris v10 drivers:**

---

**NOTE:** To use a Sun Solaris driver with the DSView software and DSR switch, you must have the following versions of DSView software on your host system and DSR switch firmware:

- DSView software version 2.x and earlier - DS Management Software suite version 1.0.9.202 or later
  - DSR switch with DSView software version 2.x and earlier - Firmware version 1.0.0.106 to 2.x
  - DSR switch with DSView software 3.0 and later - Firmware version 3.0 or later
- 

1. On the Front Panel dashboard, click the *Style Manager* button to open the Style Manager toolbar.
2. On the Style Manager toolbar, double-click the *Mouse* icon to open the Style Manager - Mouse dialog box.
3. In the Style Manager - Mouse dialog box, set the Acceleration slider to 1.0.
4. (Optional) Select the desired Handedness and Button 2 options and set the Double-Click and the Threshold sliders to the desired positions. Test the double-click speed by double-clicking the mouse icon.
5. Click *OK* to save your settings and to close the dialog box.
6. If you are using DSView or AVWorks software, select *Video - Scaling - Auto Scale* in any active remote session window.
7. Set the mouse scaling to normal by performing the following actions:
  - a. From the Video Viewer menu, select *Tools - Session Options* to open the Session Options dialog box.
  - b. Click the *Mouse* tab.
  - c. In the Mouse Scaling area, select the *Default* setting.
  - d. Click *OK* to save your settings and to close the Sessions Options dialog box.
8. Resynchronize the mouse in the software remote session window for the Avocent management software you are using.
  - If you are using DSView software version 2.x or earlier, click *Mouse Align*.
  - If you are using DSView software version 3.0 or later, click *Align Local Cursor*.
  - If you are using the AVWorks software, click *Screen Refresh*.

The mouse resynchronizes and should work properly.

## Novell NetWare

### To adjust the mouse speed and pointer settings for NetWare v5 and v6 drivers:

Novell NetWare versions 5 and 6 are not delivered with a method for changing the mouse acceleration. An NLM (NetWare Loadable Module) jointly developed by Avocent and Novell is available from the Avocent web site which may be used to properly align the mouse.

1. In a web browser, enter <http://www.avocent.com> to visit the Avocent web site home page.
2. On the Avocent web site home page, click the *Support* link to go to the Technical Support web page.
3. On the Technical Support web page, click the *Knowledge Base* link to go to a page containing Avocent hardware and software products.
4. Select the *DSView* link to list DSView software subcategories to the right of the Avocent hardware and software products.
5. Select the *Configuration and Installation* link to go to a web page containing DSView software configuration and installation information appears.
6. Select the *DSView Software Mouse Alignment with Novell GUI Netware 5 and 6* link. The Technical & Support Notes web page appears.
7. Follow the instructions on the web page.

### To adjust the mouse speed and pointer settings for NetWare v6.5 drivers:

1. While running the DSView management software, click the *Novell* button on the toolbar at the bottom of the Avocent Session Viewer window.
2. From the pop-up menu, select *Settings - GUI Environment*.
3. After the GUI Environment window displays, select the *Input* tab.
4. Disable mouse acceleration by making sure that the Acceleration Disabled checkbox is selected.
5. Resynchronize the mouse in the software remote session window for the Avocent management software you are using.
  - If you are using DSView software version 2.x or earlier, click *Mouse Align*.
  - If you are using DSView software version 3.0 or later, click *Align Local Cursor*.
  - If you are using the AVWorks software, click *Screen Refresh*.

The mouse resynchronizes and should work properly.

## Apple Mac OS

### To adjust the mouse speed and pointer settings for Versions 10.3 and later (using default drivers):

---

**NOTE:** Apple Mac OS Versions 10.3 and later have no option to disable mouse acceleration with the provided drivers. The instructions below only slow down mouse acceleration rather than disabling it. However, if you are running a later version of the DSView management software, you can activate Single Cursor Mode to make the mouse pointer "invisible." Refer to the *DSView Installer/User Guide* for detailed instructions about activating Single Cursor Mode.

---

1. Click the *Apple* icon.
2. Select *System Prefs* to open the System Prefs window.
3. Select *View - Mouse* to open the Mouse dialog box.
4. Set the Tracking Speed slider to the default of the fifth tick mark from the left.
5. (Optional) Set the Double-Click Speed slider to the desired position. Test the double-click speed by double-clicking a word in the text field below the slider.
6. (Optional) Set the Scrolling Speed slider to the desired position.
7. Close the Mouse dialog box to save your settings.
8. Resynchronize the mouse in the software remote session window for the Avocent management software you are using.
  - If you are using DSView software version 2.x or earlier, click *Mouse Align*.
  - If you are using DSView software version 3.0 or later, click *Align Local Cursor*.
  - If you are using the AVWorks software, click *Screen Refresh*.

The mouse resynchronizes and should work properly.



## *Local Port Operation*

### **Controlling Your System at the Local Port**

The DSR2035/8035 switch includes a local port on the back. This port enables you to connect a keyboard, monitor and mouse to the switch for direct access. The DSR2035/8035 switch uses the OSCAR<sup>®</sup> graphical user interface, which has intuitive menus to configure your system and select target devices. Targets can be identified by customizable names.

### **Viewing and selecting ports and servers**

Use the Main dialog box to view, configure and control target devices in the DSR2035/8035 switching system. You may view the target devices by name, port or by the unique Electronic ID (EID) embedded in each DSRIQ module. You will see an OSCAR interface-generated port list by default when you first launch the OSCAR interface.

The Port column indicates the port to which a target device is connected.

#### **To access the OSCAR interface Main dialog box:**

Press **Print Screen** to launch the OSCAR interface. The Main dialog box will appear.



Figure 3.1: OSCAR Interface Main Dialog Box

Table 3.1: Main Dialog Box Functions

Button	Function
<b>VMedia</b>	Set virtual media options and make virtual media connections. This option is only available when a KVM session is in progress.
<b>Log Out</b>	Disconnect the KVM and user sessions.
<b>Clear</b>	Clear all offline DSRIQ modules.
<b>Disconnect</b>	Disconnect the KVM session.
<b>Setup</b>	Access the Setup dialog box and configure the OSCAR interface.
<b>Commands</b>	Access the Commands dialog box.

### To manage a KVM session from the Main dialog box:

Click *Clear* to clear all offline DSRIQ modules.









-or-

Click *Disconnect* to disconnect a KVM session. If there is an associated Locked virtual media session, it will be disconnected.

## Viewing the status of your DSR2035/8035 switching system

The status of target devices in your system is indicated in the far right columns of the Main dialog box. The following table describes the status symbols.

**Table 3.2: OSCAR Interface Status Symbols**

Symbol	Description
	(green circle) Server connected, powered up and the DSRIQ module is online.
	Connected target device is powered down or is not operating properly and the DSRIQ module is offline.
	Connected switch is online.
	Connected switch is offline or not operating properly.
	(yellow circle) The designated DSRIQ module is being upgraded. When this symbol displays, do not cycle power to the DSR2035/8035 switch or connected target devices and do not disconnect DSRIQ modules. Doing so may render the module permanently inoperable and require the DSRIQ module to be returned to the factory for repair.
	(green letter) DSRIQ module is being accessed by the indicated user channel.
	(black letter) DSRIQ module is blocked by the indicated user channel. For instance, in Figure 3.1, user B is viewing Forester, but is blocking access to Acton, Barrett and Edie which are connected to the same DSRIQ module.
	(blue letter) A remote virtual media connection is established to the server connected to the indicated user channel.

### Selecting target devices

Use the Main dialog box to select target devices. When you select a target device, the DSR2035/8035 switch reconfigures the keyboard and mouse to the settings for the selected target device.

#### To select target devices:

Double-click the target device name, EID or port number.

-or-

If the display order of your list is by port (*Port* button is depressed), type the port number and press **Enter**.

-or-

If the display order of your list is by name or EID (*Name* or *EID* button is depressed), type the first few letters of the name of the target device, or the EID number to establish it as unique and press **Enter**.

**To select the previous target device:**

Press **Print Screen** and then **Backspace**. This key combination toggles you between the previous and current connections.

**To disconnect from a target device:**

Press **Print Screen** and then **Alt+0** (zero). This leaves the user in a free state, with no target device selected. The status flag on your desktop displays *Free*.

**Soft switching**

Soft switching is the ability to switch target devices using a hotkey sequence. You can soft switch to a target device by pressing **Print Screen** and then typing the first few characters of its name or number. If you have set a Screen Delay Time and you press the key sequences before that time has elapsed, the OSCAR interface will not display.

**To configure the OSCAR interface screen delay:**

1. Press **Print Screen** to launch the OSCAR interface. The Main dialog box appears.
2. Click *Setup - Menu*. The Menu dialog box appears.
3. For Screen Delay Time, type the number of seconds of delay desired before the Main dialog box is displayed after **Print Screen** is pressed.
4. Click *OK*.

**To soft switch to a target device:**

1. Press **Print Screen**. If the display order of the Main dialog is by port (*Port* button is depressed), type the port number and press **Enter**.  
-or-  
If the display order of the Main dialog is by name (*Name* button is depressed), type the first few letters of the name of the target device to establish it as unique and press **Enter**.
2. To switch back to the previous target device, press **Print Screen** then **Backspace**.

## Navigating the OSCAR Interface

This table describes how to navigate the OSCAR interface using the keyboard and mouse.

**Table 3.3: OSCAR Interface Navigation Basics**

Keystroke	Function
<b>Print Screen</b>	Opens the OSCAR interface. Press <b>Print Screen</b> twice to send the Print Screen keystroke to the currently selected DSRIQ module.
<b>F1</b>	Opens the Help screen for the current dialog box.
<b>Escape</b>	Closes the current dialog box without saving changes and returns to the previous one. If the Main dialog box is displayed, pressing <b>Escape</b> closes the OSCAR interface and displays a status flag if status flags are enabled. See <i>Controlling the status flag</i> in this chapter for more information. In a message box, pressing <b>Escape</b> closes the pop-up box and returns to the current dialog box.
<b>Alt</b>	Opens dialog boxes, selects or checks options and executes actions when used with underlined or other designated letters.
<b>Alt+X</b>	Closes current dialog box and returns to previous one.
<b>Alt+O</b>	Selects the <i>OK</i> button, then returns to the previous dialog box.
<b>Enter</b>	Completes a switch operation in the Main dialog box and exits the OSCAR interface.
<b>Single-click, Enter</b>	In a text box, single-clicking an entry and pressing <b>Enter</b> selects the text for editing and enables the <b>Left</b> and <b>Right Arrow</b> keys to move the cursor. Press <b>Enter</b> again to quit the edit mode.
<b>Print Screen, Backspace</b>	Toggles back to previous selection.
<b>Print Screen, Alt+0 (zero)</b>	Immediately disengages user from a target device; no target device is selected. Status flag displays <i>Free</i> . (This only applies to the <b>0</b> (zero) on the keyboard and not the numeric keypad.)
<b>Print Screen, Pause</b>	Immediately turns on Screen Saver mode and prevents access to that specific console, if it is password protected.
<b>Up/Down Arrows</b>	Moves the cursor from line to line in lists.
<b>Right/Left Arrows</b>	Moves the cursor between columns. When editing a text box, these keys move the cursor within the column.
<b>Page Up/Page Down</b>	Pages up and down through Name and Port lists and Help pages.
<b>Home/End</b>	Moves the cursor to the top or bottom of a list.
<b>Backspace</b>	Erases characters in a text box.
<b>Delete</b>	Deletes current selection in the Scan list or characters in a text box.

**Table 3.3: OSCAR Interface Navigation Basics (Continued)**

Keystroke	Function
<b>Shift-Del</b>	Deletes from the current selection to the end of the list when editing a Scan list.
<b>Numbers</b>	Type from the keyboard or keypad.
<b>Caps Lock</b>	Disabled. Use the <b>Shift</b> key to change case.
<b>Backspace</b>	Erases characters in a text box.

## Configuring OSCAR Interface Menus

You can configure your DSR2035/8035 switching system from the Setup dialog box within the OSCAR interface. Select the *Names* button when initially setting up your DSR2035/8035 switching system to identify target devices by unique names. Select the other setup features to manage routine tasks for your target devices from the OSCAR interface menu. Table 3.4 outlines the function accessed using each of the buttons in the Setup dialog box as shown in Figure 3.2.

**Table 3.4: Setup Features to Configure the OSCAR Interface**

Feature	Purpose
<b>Menu</b>	Change the Main dialog box list sorting option by toggling between numerically by port or EID number and alphabetically by name. Change the Screen Delay Time before the OSCAR interface displays after pressing <b>Print Screen</b> .
<b>Flag</b>	Change display, timing, color or location of the status flag.
<b>Broadcast</b>	Simultaneously send mouse movements and keystrokes to multiple target devices.
<b>Scan</b>	Set up a custom Scan pattern for up to 16 target devices.
<b>Screen Saver</b>	Set passwords to protect or restrict access or enable the screen saver.
<b>Keyboard</b>	Set the keyboard country code to send to Sun servers.
<b>Devices</b>	Identify the appropriate number of ports on an attached cascade switch.
<b>Names</b>	Identify target devices by unique names.

### To access the OSCAR interface Setup dialog box:

1. Press **Print Screen** to launch the OSCAR interface. The Main dialog box appears.
2. Click *Setup* to open the Setup dialog box.



Figure 3.2: OSCAR Interface Setup Dialog Box

### Assigning target device names

Use the Names dialog box to identify target devices by name rather than by port number. The Names list is always sorted by port order. You can toggle between displaying the name or the EID number of each DSRIQ module, so even if you move the target device to another port, the name and configuration will be recognized by the switch.

---

**NOTE:** If a target device is turned off, its respective DSRIQ module will not appear in the Names list.

---

### To access the OSCAR interface Names dialog box:

1. If the OSCAR interface is not open, press **Print Screen**. The Main dialog box appears.
2. Click *Setup - Names* to open the Names dialog box as shown in Figure 3.3.

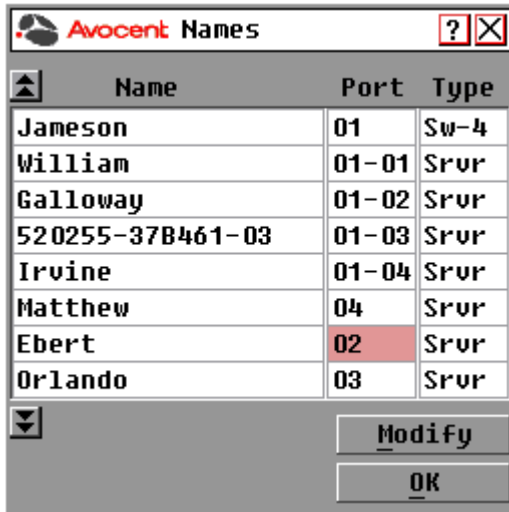


Figure 3.3: OSCAR Interface Names Dialog Box

**NOTE:** If new DSRIQ modules are discovered by the DSR2035/8035 switch, the on-screen list will be automatically updated. The mouse cursor will change into an hourglass during the update. No mouse or keyboard input will be accepted until the list update is complete.

#### To assign names to target devices:

1. In the Names dialog box, select a target device name or port number and click *Modify* to open the Name Modify dialog box as shown in Figure 3.4 on page 29.





**Figure 3.4: OSCAR Interface Name Modify Dialog Box**

2. Type a name in the New Name box. Names of target devices may contain all printable characters.
3. Click *OK* to transfer the new name to the Names dialog box. Your selection is not saved until you click *OK* in the Names dialog box.
4. Repeat steps 1-3 for each target device in the system.
5. Click *OK* in the Names dialog box to save your changes.

-or-

Click *X* or press **Escape** to exit the dialog box without saving changes.

---

**NOTE:** If a DSRIQ module has not been assigned a name, the EID is used as the default name.

---

#### **To list target devices alphabetically by name:**

Press **Alt+N** or click *Name* in the Main dialog box.

#### **To access the OSCAR interface Devices dialog box:**

1. If the OSCAR interface is not open, press **Print Screen** to open the Main dialog box.
2. Click *Setup - Devices* to open the Devices dialog box as shown in Figure 3.5.

---

**NOTE:** The Modify button is available only if a configurable switch is selected.

---

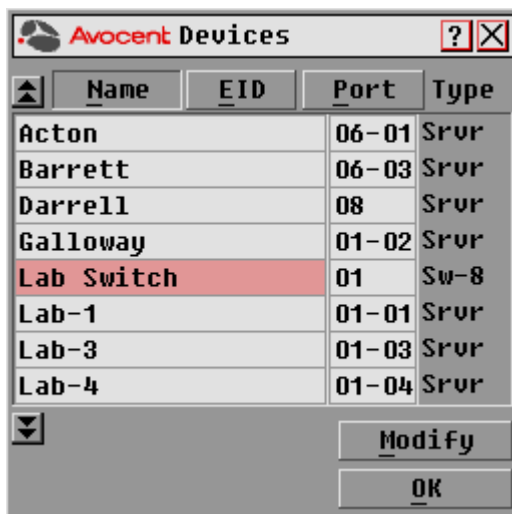


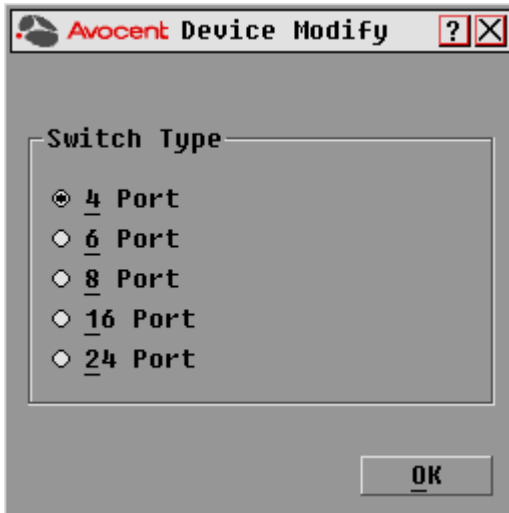
Figure 3.5: OSCAR Interface Devices Dialog Box

When the DSR2035/8035 switch discovers a cascade switch, the numbering format changes from a DSR port only to [DSR port]-[switch port] to accommodate each target device under that switch.

For example, if a switch is connected to DSR port 6, each target device connected to it would be numbered sequentially. The target device using DSR port 6, switch port 1, would be 06-01, the target device using DSR port 6, switch port 2, would be 06-02, and so on.

**To assign a device type:**

1. In the Devices dialog box, select the desired port number.
2. Click *Modify* to open the Device Modify dialog box.



**Figure 3.6: OSCAR Interface Device Modify Dialog Box**

3. Choose the number of ports supported by your switch and click *OK*.
4. Repeat steps 1-3 for each port requiring a device type to be assigned.
5. Click *OK* in the Devices dialog box to save settings.

---

**NOTE:** Changes made in the Device Modify dialog box are not saved until you click *OK* in the Devices dialog box.

---

**Changing the display behavior**

Use the Menu dialog box, shown in Figure 3.7 on page 32, to change the display order of target devices and set a Screen Delay Time for the OSCAR interface. The display order setting alters how target devices will display in several dialog boxes, including Main, Devices and Broadcast.

**To access the OSCAR interface Menu dialog box:**

1. Press **Print Screen** to launch the OSCAR interface and to open the Main dialog box.
2. Click *Setup - Menu* in the Main dialog box to open the Menu dialog box appears.

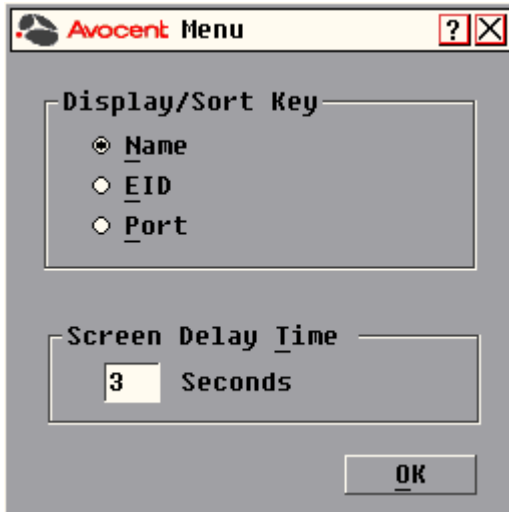


Figure 3.7: OSCAR Interface Menu Dialog Box

**To choose the display order of target devices:**

1. Select *Name* to display target devices alphabetically by name.  
-or-  
Select *EID* to display target devices numerically by EID number.  
-or-  
Select *Port* to display target devices numerically by port number.
2. Click *OK*.

Depending on the display method selected, the corresponding button will be depressed in the Main dialog box.

**To set a Screen Delay Time for the OSCAR interface:**


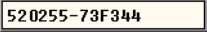


1. Type in the number of seconds (0-9) to delay the OSCAR Interface display after you press **Print Screen**. Entering **0** will instantly launch the OSCAR interface with no delay.
2. Click *OK*.

Setting a Screen Delay Time enables you to complete a soft switch without the OSCAR interface displaying. To perform a soft switch, see the *Soft switching* section on page 24.

## Controlling the status flag

The status flag displays on your desktop and shows the name or EID number of the selected target device or the status of the selected port. Use the Flag dialog box to configure the flag to display by target device name or EID number, or to change the flag color, opacity, display time and location on the desktop. Table 3.5 describes each status flag.

**Table 3.5: OSCAR Interface Status Flags**

Flag	Description
	Flag type by name
	Flag type by EID number
	Flag indicating that the user has been disconnected from all systems
	Flag indicating that Broadcast mode is enabled

### To access the OSCAR interface Flag dialog box:

1. If the OSCAR interface is not open, press **Print Screen** to open the Main dialog box.
2. Click *Setup - Flag* to open the Flag dialog box as shown in Figure 3.8.



**Figure 3.8: OSCAR Interface Flag Dialog Box**

**To determine how the status flag is displayed:**

1. Select *Name* or *EID* to determine what information will be displayed.
2. Select *Displayed* to show the flag all the time or select *Timed* to display the flag for only five seconds after switching.
3. Select a flag color under Display Color. The following flag colors are available:
  - *Flag 1* - Gray flag with black text
  - *Flag 2* - White flag with red text
  - *Flag 3* - White flag with blue text
  - *Flag 4* - White flag with violet text
4. In Display Mode, select *Opaque* for a solid color flag.  
-or-  
Select *Transparent* to see the desktop through the flag.
5. To position the status flag on the desktop:
  - a. Click *Set Position* to gain access to the Position Flag screen as shown in Figure 3.9.

**Figure 3.9: Position Flag**

- b. Left-click on the title bar and drag to the desired location.
- c. Right-click to return to the Flag dialog box.

---

**NOTE:** Changes made to the flag position are not saved until you click *OK* in the Flag dialog box.

---

6. Click *OK* to save settings.  
-or-  
Click *X* to exit without saving changes.

**Broadcasting to target devices**

The local user can simultaneously control multiple target devices in a system to ensure that all selected target devices receive identical input. You can choose to broadcast keystrokes and/or mouse movements independently.

---

**NOTE:** You can broadcast to as many as eight target devices at a time, one target device per port.

---

**To access the OSCAR interface Broadcast dialog box:**

1. If the OSCAR interface is not open, press **Print Screen** to open the Main dialog box.
2. Click *Setup - Broadcast* to open the Broadcast dialog box as shown in Figure 3.10 on page 35.

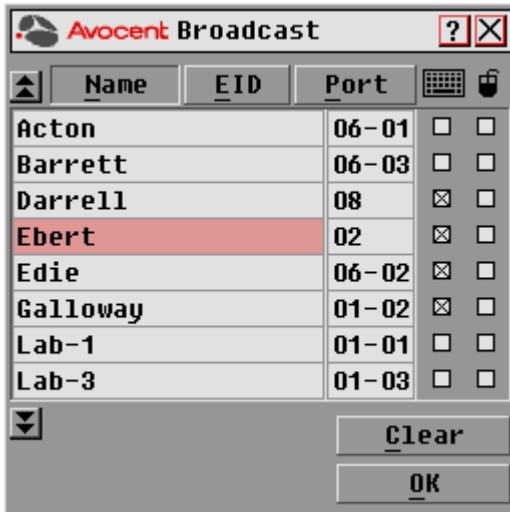


Figure 3.10: OSCAR Interface Broadcast Dialog Box

**NOTE: Broadcasting Keystrokes** - The keyboard state must be identical for all target devices receiving a broadcast to interpret keystrokes identically. Specifically, the **Caps Lock** and **Num Lock** modes must be the same on all keyboards. While the switch attempts to send keystrokes to the selected target devices simultaneously, some target devices may inhibit and thereby delay the transmission.

**Broadcasting Mouse Movements** - For the mouse to work accurately, all systems must have identical mouse drivers, desktops (such as identically placed icons) and video resolutions. In addition, the mouse must be in exactly the same place on all screens. Because these conditions are extremely difficult to achieve, broadcasting mouse movements to multiple systems may have unpredictable results.

### To broadcast to selected target devices:

- From the Broadcast dialog box, select the mouse and/or keyboard checkboxes for the target devices that are to receive the Broadcast commands.  
-or-  
Press the **Up** or **Down Arrow** keys to move the cursor to the target device. Then press **Alt+K** to select the keyboard checkbox and/or **Alt+M** to select the mouse checkbox. Repeat for additional target devices.
- Click **OK** to save the settings and return to the Setup dialog box. Click **X** or press **Escape** to return to the Main dialog box.
- Click **Commands** to open the Commands dialog box.
- Select the **Broadcast Enable** checkbox to activate Broadcasting.
- From the user station, type the information and perform the mouse movements you wish to broadcast.

### To turn Broadcasting off:

From the Commands dialog box, clear the *Broadcast Enable* checkbox.

### Using Scan mode

In Scan mode, the DSR2035/8035 switch automatically scans from port to port (target device to target device). You can scan up to eight target devices, specifying which ones to scan and the number of seconds that each will display. The scanning order is determined by placement of the target device in the list. The list is always shown in scanning order. You can, however, choose to display the target device's name or EID number by pressing the appropriate button.

---

**NOTE:** Scanning is available only to the local user.

---

### To add target devices to the Scan list:

1. If the OSCAR interface is not open, press **Print Screen** to open the Main dialog box.
2. Click *Setup - Scan* to open the Scan dialog box as shown in Figure 3.11.

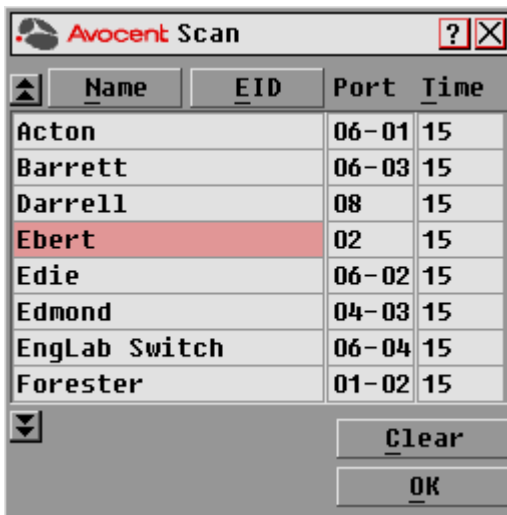


Figure 3.11: OSCAR Interface Scan Dialog Box

3. Determine the order within the list to add the target device. If there are no target devices in the Scan list, your cursor will appear in a blank line at the top of the list.
  - or-
  - To add a target device to the end of the list, place your cursor in the last target device entry and press the **Down Arrow** key.
  - or-
  - To add a target device within an existing list, place your cursor in the line below where you want to insert a new target device and press **Insert**.



4. Type the first few characters of a target device name or port number to scan. The first matching target device will appear in the line.  
-or-  
Press the following keyboard commands in the Name, Port or Time column to move through the list of target devices available to scan.
  - a. Press **Alt+Down Arrow** to move the cursor down through the list of target devices.
  - b. Press **Alt+Up Arrow** to move the cursor up through the list of target devices.
  - c. Press **Alt+Home** to move the cursor to the first target device in the list.
  - d. Press **Alt+End** to move the cursor to the last target device in the list.
5. In the Time column, type the number of seconds (from 3-255) of desired time before the scan moves to the next target device in the sequence.
6. Move the cursor to the next line or press **Down Arrow** and repeat steps 2-5 for each of the remaining target devices to be included in the scan pattern.
7. Click *OK* to save your settings.

#### To remove a target device from the Scan list:

1. In the Scan dialog box, click the target device to be removed.
2. Press **Delete**.  
-or-  
Press **Shift+Delete** to remove the selected target device and all entries below it.
3. Click *OK* to save your settings.

#### To start the Scan mode:

1. If the OSCAR interface is not open, press **Print Screen** to open the Main dialog box.
2. Click *Commands* to open the Commands dialog box as shown in Figure 3.12.

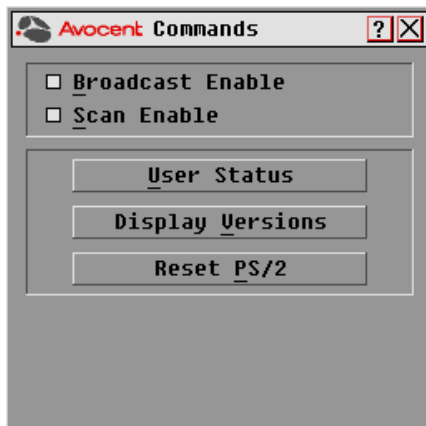


Figure 3.12: OSCAR Interface Commands Dialog Box

3. Select *Scan Enable* in the Commands dialog box.
4. Click *X* to close the Commands dialog box.

---

**NOTE:** Scanning will begin as soon as the Scan Enable button is selected.

---

### To cancel Scan mode:

Select a target device if the OSCAR interface is open.

-or-

Move the mouse or press any key on the keyboard if the OSCAR interface is not open. Scanning will stop at the currently selected target device.

-or-

If the OSCAR interface is not open, press **Print Screen**. The Main dialog box will appear.

- a. Click *Commands* to open the Commands dialog box shown in Figure 3.12 on page 37.
- b. Clear *Scan Enable*.

### Setting local port Screen Saver options

Use the Screen Saver dialog box to manage the screen saver inactivity time and test the Screen Saver mode on the local port. If security has been enabled in the DSView software, after the specified Inactivity Time elapses, the local port locks and remains locked until you press any key or move the mouse. You will then need to log in to continue.

### To access the OSCAR interface Screen Saver dialog box:

1. If the OSCAR interface is not open, press **Print Screen** to open the Main dialog box.
2. Click *Setup - Screen Saver* to open the Screen Saver dialog box as shown in Figure 3.13.

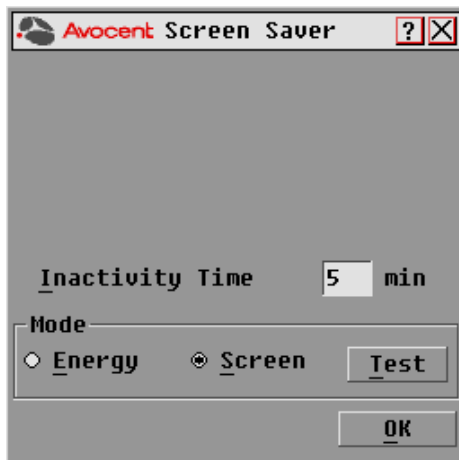


Figure 3.13: OSCAR Interface Screen Saver Dialog Box

### To set the Screen Saver options:

---

**NOTE:** The Screen Saver password is set within the DSView software. For more information, see the *DSView Installer/User Guide*.

---

1. Type the number of minutes for Inactivity Time (from 1-99) to delay activation of password protection and the screen saver feature.
2. For Mode, select *Energy* if your monitor is ENERGY STAR<sup>®</sup> compliant; otherwise select *Screen*.




---

**CAUTION:** Monitor damage can result from the use of Energy mode with monitors not compliant with ENERGY STAR<sup>®</sup>.

---

3. (Optional) Click *Test* to activate the screen saver test which lasts 10 seconds then returns you to the Security dialog box.
4. Click *OK* to save your settings.

### To exit Screen Saver mode and log in to the local port:

1. Press any key or move the mouse.
2. If Screen Saver security was turned on in the DSView software, you will see a login screen. Enter your username and password and then click *OK*. If you do not know your username and password, see the DSView Server software administrator.
3. The Main dialog box appears and any previous target device connection will be restored.

### To immediately turn on the screen saver:

1. Press **Print Screen**.
2. Then press **Pause**.

This command sequence works only when the user is connected to a target device.

### Setting the keyboard country code

---

**NOTE:** Using a keyboard code that supports a language different from that of your DSR2035/8035 switch firmware will cause incorrect keyboard mapping.

---

Sun servers may use keyboard mappings for non-US keyboards. By default, the DSR2035/8035 switch sends the US keyboard country code to Sun and USB modules attached to target devices and the code is applied to the target devices when they are powered up or rebooted. Codes are then stored in the DSRIQ module.

Issues may arise when you use the US keyboard country code with a keyboard of another country. For example, the **Z** key on a US keyboard is in the same location as the **Y** key on a German keyboard. Sun servers will interpret pressing the **Y** key on a German keyboard as pressing the **Z** key when the US keyboard country code is used.

The Keyboard dialog box enables you to send a different keyboard country code than the default US setting. The specified country code is sent to all target devices attached to the DSR2035/8035 switches when they are powered up or rebooted and the new code is stored in the DSRIQ module.

---

**NOTE:** If a DSRIQ module is moved to a different target device, the keyboard country code will need to be reset.

---

See *Appendix F* for information on emulating certain Sun keys using a PS/2 keyboard and special considerations for Japanese and Korean Sun USB keyboards.

---

**NOTE:** Only local users can view or change keyboard country code settings.

---

### To set the keyboard country code for Sun servers:

1. If the OSCAR interface is not open, press **Print Screen** to open the Main dialog box.
2. Click *Setup - Keyboard* to open the Keyboard dialog box.



**Figure 3.14: OSCAR Interface Keyboard Dialog Box**

3. Select a country code and click *OK* to save your settings.
4. Reboot the Sun servers. After rebooting, each Sun server will request the country code setting stored in the DSRIQ module.

---

**NOTE:** If you wish to reboot the target devices by power-cycling them, you must wait 90 seconds before rebooting. A soft reboot may be performed without waiting 90 seconds.

---

## Setting virtual media options

You can determine the behavior of the DSR2035/8035 switch during a virtual media session using the options provided in the Virtual Media dialog box. Table 3.6 outlines the options that can be set for virtual media sessions.

**Table 3.6: Virtual Media Options**

Function	Purpose
<b>Appliance</b>	
<b>Locked</b>	Synchronizes the KVM and virtual media sessions so that when a user disconnects a KVM connection, the virtual media connection to that server is also disconnected. A local user attempting to switch to a different server is also disconnected.
<b>Select Local Mapping Options</b>	
<b>Reserve</b>	Ensures that a virtual media connection can only be accessed with your username and that no other user can create a KVM connection to that server. When the associated KVM session is disconnected, the virtual media session may be disconnected according to the Locked setting in the Virtual Media dialog box.
<b>CD ROM</b>	Allows virtual media sessions to the first detected CD-ROM drive. Enable this checkbox to establish a virtual media CD-ROM connection to a server. Disable to end a virtual media CD-ROM connection to a server.
<b>Mass Storage</b>	Allows virtual media sessions to the first detected mass storage drive. Enable this checkbox to establish a virtual media mass storage connection to a server. Disable to end a virtual media mass storage connection to a server.
<b>Write Access</b>	Allows a target server to write data to the virtual media during a virtual media session. Read access is always allowed during a virtual media session.

### To set virtual media options:

1. If the OSCAR interface is not open, press **Print Screen** to open the Main dialog box.
2. Click *Setup - VM* to open the Virtual Media dialog box shown in Figure 3.15 on page 42.



**Figure 3.15: OSCAR Interface Virtual Media Dialog Box**

3. Click to enable or disable each of the options. For information about individual settings, see Table 3.6 on page 41.
4. Click *OK* to accept the options you have selected and return to the Setup dialog box.

## Managing server tasks using the OSCAR interface

From the OSCAR interface Commands dialog box, you can manage your DSR2035/8035 switching system and user connections, enable the Scan and Broadcast modes and update your firmware.

**Table 3.7: Commands to Manage Routine Tasks for Your Target Devices**

Feature	Purpose
<b>Broadcast Enable</b>	Begin broadcasting to your target devices. Configure a target device list for broadcasting under the Setup dialog box.
<b>Scan Enable</b>	Begin scanning your target devices. Set up a target device list for scanning in the Setup dialog box.
<b>User Status</b>	View and disconnect users.
<b>Display Versions</b>	View version information for the DSR2035/8035 switch as well as view and upgrade firmware for individual DSRIQ modules.
<b>Reset PS/2</b>	Re-establish operation of PS/2 keyboard and mouse.

**To access the OSCAR interface Commands dialog box:**

1. If the OSCAR interface is not open, press **Print Screen** to open the Main dialog box.
2. Click *Commands* to open the Commands dialog box as shown in Figure 3.16.



**Figure 3.16: OSCAR Interface Commands Dialog Box**

**Viewing and disconnecting user connections**

You can view and disconnect users through the User Status dialog box. The username (U) will always be displayed; however, you can display either the target device name or EID number to which a user is connected. If there is no user currently connected to a channel, the user field will be blank and the Server Name field will display *Free*.

**To view current user connections:**

1. If the OSCAR interface is not open, press **Print Screen** to open the Main dialog box.
2. Click *Commands - User Status* to open the User Status dialog box shown in Figure 3.17 on page 44.

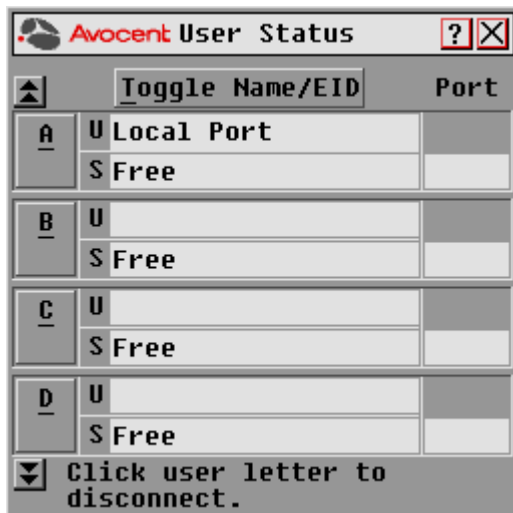


Figure 3.17: OSCAR Interface User Status Dialog Box

#### To disconnect a user:

1. If the OSCAR interface is not open, press **Print Screen** to open the Main dialog box.
2. Click *Commands - User Status* to open the User Status dialog box shown in Figure 3.17.
3. Click the letter corresponding to the user to disconnect. The Disconnect dialog box will appear as shown in Figure 3.18.



Figure 3.18: OSCAR Interface Disconnect Dialog Box



4. Click *OK* to disconnect the user and return to the User Status dialog box.  
-or-  
Click *X* or press **Escape** to exit the dialog box without disconnecting a user.

---

**NOTE:** If the User Status list has changed since it was last displayed, the mouse cursor will turn into an hourglass as the list is automatically updated. No mouse or keyboard input will be accepted until the list update is complete.

---

### Resetting your PS/2 keyboard and mouse

---

**NOTE:** This function is for Microsoft Windows-based computers only. Resetting the PS/2 on a target device running any other operating system may require that you reboot that target device.

---

If your PS/2 keyboard or mouse locks up, you may be able to re-establish operation of these peripherals by issuing a Reset command. The Reset command sends a hot-plug sequence to the target device which causes the mouse and keyboard settings to be sent to the DSR2035/8035 switch. With communication re-established between the target device and the DSR2035/8035 switch, functionality is restored to the user.

#### To reset the PS/2 mouse and keyboard values:

1. If the OSCAR interface is not open, press **Print Screen** to open the Main dialog box.
2. Click *Commands - Reset PS/2*. A message box displays requesting that you confirm the reset.
3. In the message box, click *OK*.
  - a. A message appears indicating that the mouse and keyboard have been reset.
  - b. Click *X* to close the message box.-or-  
Click *X* or press **Escape** to exit without sending a Reset command to the PS/2 mouse and keyboard.

#### Displaying version information

The OSCAR interface enables you to display the version number of the switch firmware and any auxiliary devices connected to the switch. This information facilitates system troubleshooting and support. For optimum performance, keep your firmware current.

#### To display version information:

1. If the OSCAR interface is not open, press **Print Screen** to open the Main dialog box.
2. Click *Commands - Display Versions* to open the Version dialog box shown in Figure 3.19 on page 46. The top half of the box lists the subsystem versions in the DSR2035/8035 switch.

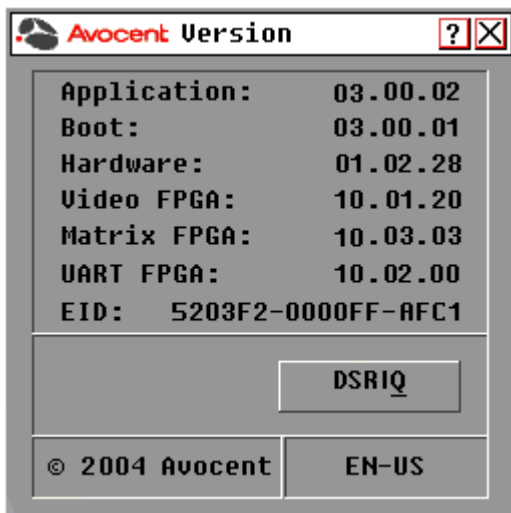


Figure 3.19: OSCAR Interface Version Dialog Box

- To view individual DSRIQ module version information, click *DSRIQ* to open the DSRIQ Selection dialog box shown in Figure 3.20.

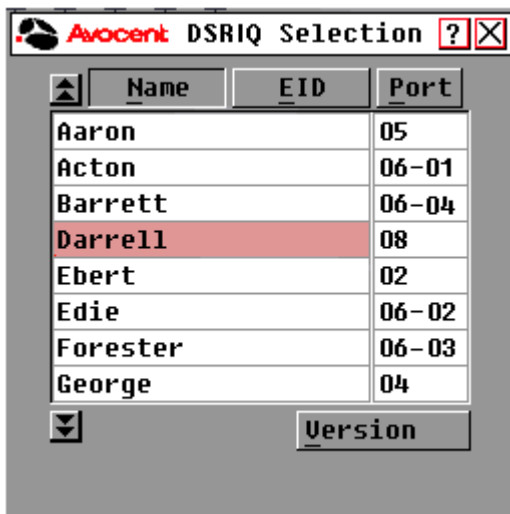


Figure 3.20: DSRIQ Selection Dialog Box

- Select a DSRIQ module to view and click the *Version* button. The DSRIQ Version dialog box appears. An example is shown in Figure 3.21 on page 47.

For more information on loading firmware, refer to *Appendix A*.



Figure 3.21: DSRIQ Version Dialog Box

5. Click *X* to close the DSRIQ Version dialog box.



## Web Server Operations

### Overview of the DSR2035/8035 Web Server

In addition to the OSCAR on-screen interface, the DSR2035/8035 switch provides a built in web server to handle all basic KVM switching needs. For enhanced functionality and control of multiple devices, users can upgrade to the DSView 3 software package. The DSR web server provides secure “point-and-click” web browser-based access to control any device attached to your DSR2035/8035 switch.

The DSR web server supports the following browsers:

- Microsoft® Internet Explorer version 6.0 SP1 and later
- Mozilla version 1.7.3 and later
- Firefox version 1.0 and later
- Netscape version 7.2 and later

Avocent recommends that the browser be kept up to date with the latest version.

A Video Viewer window allows you to control the keyboard, monitor and mouse functions of individual target devices connected to the DSR2035/8035 switch in real time. You may also use predefined global macros to perform actions within the Video Viewer window. For instructions on how to use the Video Viewer, see Chapter 5. Once the switch has been installed and configured as described in Chapter 2 and you have set the IP address, you are ready to begin daily operation.

### Viewing and Selecting Ports and Servers

Before you can begin a KVM session, you must first login to the DSR web server.

#### To log in to the DSR web server:

1. Launch a web browser.
2. In the address field of the browser, enter the IP address that you assigned to your DSR2035/8035 switch. Use `https://xxx.xx.xx.xx` as the format.
3. When the browser makes contact with the switch, enter your username and password, then click *Login*. The DSR Explorer Window will appear.

---

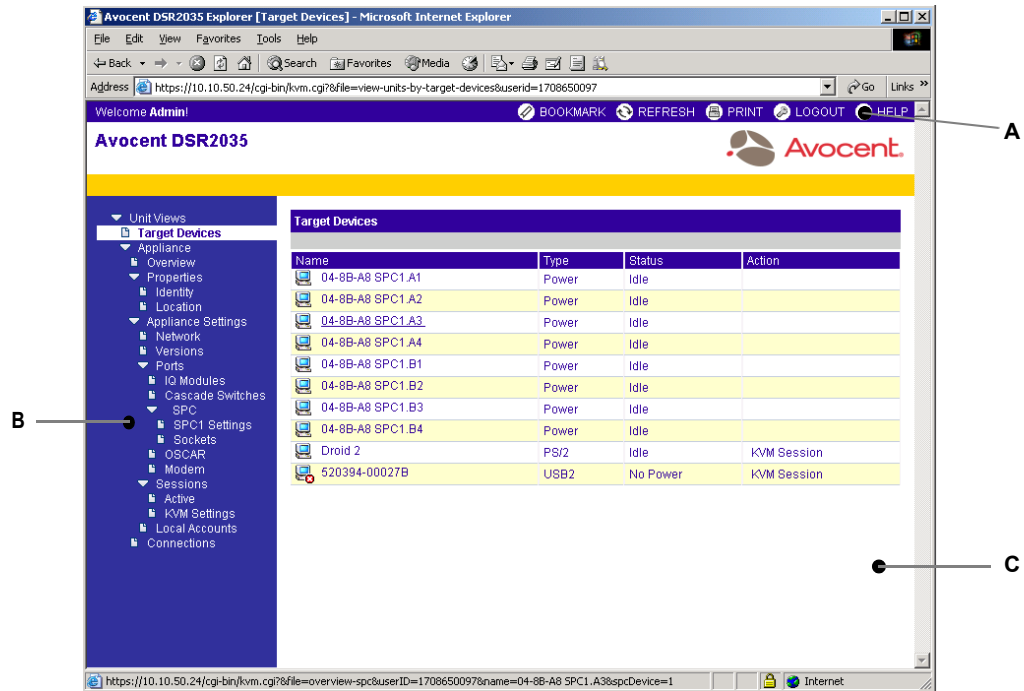
**NOTE:** The default username is Admin with no password.

---

## About the DSR Explorer Window

When a user has been logged in and authenticated, the Avocent DSR Explorer window appears. From the DSR Explorer window, users may view, access and manage their DSR2035/8035 switch. The window may also be used to specify system settings and change profile settings.

Figure 4.1 shows the DSView Explorer window areas for the DSR2035/8035 switch.



**Figure 4.1: Avocent DSR Explorer Window**

Table 4.1 on page 51 describes some of the DSR Explorer window areas.

Table 4.1: DSR Explorer Window Area Descriptions

Letter	Description
A	Top option bar - Use the top option bar to bookmark a DSR web server window, refresh the display of a DSR web server window, print a web page, log out of a software session or access the Avocent Technical Support help page. The name of the logged in user appears on the left side of the top option bar.
B	Side navigation bar - Use the side navigation bar to display the system information you wish to display or edit, which displays in the content area. The side navigation bar also contains icons in the top left corner which, when clicked, expand or collapse all nodes.
C	Content area - Use the content area to display or make changes to the DSR web server system.

## Using the side navigation bar

You can use the side navigation bar to display windows in which you can specify settings or perform operations. Figure 4.2 shows the side navigation bar of the DSR2035/8035 Explorer window.

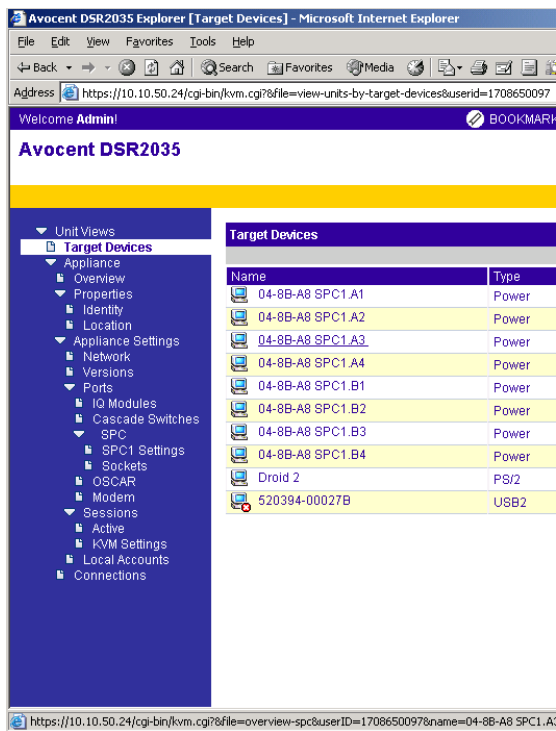


Figure 4.2: Side Navigation Bar

Clicking on a link that does not contain an arrow will display its corresponding window.

## Using the top option bar

### Bookmarking a window (Internet Explorer only)

The DSR Explorer window contains a bookmark icon and text in the top option bar. Bookmarking a window will add a link to the window in the Favorites drop-down menu. You may select the link at any time to quickly access the bookmarked window.

If you bookmark a window and information related to the window changes, this new information will appear in the window when you next display the bookmarked window.

If you click *BOOKMARK* or the bookmark icon after the DSR web server session has timed out, the User Login window will open and you must log in again.

#### To bookmark a window:

1. In the top option bar, click *BOOKMARK* or the bookmark icon. The Add Favorite dialog box will appear.
2. If you wish, type a name for the window. You may also click the *Create in* button to create or specify a folder in which to place the window.
3. Click *OK* to close the Add Favorite dialog box.

### Printing a window

All DSR web server windows contain a print icon in the top option bar.

#### To print a DSR web server window:

1. In the top option bar, click *PRINT* or the print icon. The Print dialog box will appear.
2. Specify the options you wish to use for printing the DSR web server window.
3. Click *Print* to print the DSR web server window and close the Print dialog box.

### Refreshing a window

A DSR Explorer window may be refreshed at any time by clicking *REFRESH* or the refresh icon in the top option bar.

### Logging Out

A user may log out at any time by clicking the logout icon in the top option bar.



## Launching a KVM session

### To launch a KVM session from the DSR Explorer:

1. From the DSR Explorer, select *Target Devices* in the side navigation bar. A list of available devices will appear.
2. Click the *KVM session* link to the right of the target device that you wish to access. The Video Viewer will launch. For more information on the Video Viewer, see Chapter 5.

If the target device is currently in use, users attempting access will be given an opportunity to force a connection to the device if their preemption level is equal to or higher than the current user's.

Users may also launch KVM sessions from the Unit Overview window.

### To delete offline IQ modules:

1. If you wish to only list servers that are available and powered, click *Appliance - Appliance Settings - Ports - IQ modules* to activate the Appliance IQ modules window.
2. Click the *Delete Offline* button.

### To disconnect an active KVM session (Administrator only):

1. Click *Appliance - Appliance Settings - Sessions - Active* to display a list of active KVM sessions.
2. Select the checkbox to the left of the session you wish to disconnect and click the *Disconnect* button.

## Managing a DSR web server device

While not as powerful as the DSView 3 software, the DSR web server provides several configuration options to tailor the DSR2035/8035 switch to your specific application.

### Upgrading DSRIQ modules

The DSRIQ Flash upgrade feature allows you to update DSRIQ modules with the latest firmware available. This update can be performed using the DSR web server, DSView 3 software or the OSCAR interface.

After the Flash memory is reprogrammed with the upgrade, the DSR2035/8035 switch performs a soft reset, which terminates all DSRIQ module sessions. A target device experiencing a DSRIQ module firmware update may not display, or may display as disconnected. The target device will appear normally when the Flash update is completed.

---

**NOTE:** Check [www.avocent.com](http://www.avocent.com) for firmware upgrade files.

---

**NOTE:** DSRIQ modules are automatically updated when the DSR2035/8035 switch is updated. To update your DSR2035/8035 switch firmware, see Appendix A on page 81 or the DSView 3 Software Online Help.

---

DSRIQ modules may also be force upgraded should the need arise.

**To force upgrade the DSRIQ module firmware using the DSR web server:**

1. From the side navigation bar, select *Appliance - Appliance Settings - Ports - IQ modules*.
2. Select the IQ modules that you wish to upgrade and click the *Upgrade* button.



---

**CAUTION:** Disconnecting a DSRIQ module during a firmware update or cycling power to the target device will render the module inoperable and require the DSRIQ module to be returned to the factory for repair.

---

**Rebooting the appliance**

Periodically, such as after an upgrade, you may need to reboot the DSR2035/8035 switch.

**To reboot the DSR2035/8035 switch remotely:**

1. From the side navigation bar, select *Appliance - Overview*.
2. When the appliance overview window appears, click *Reboot Appliance*.

## Managing local accounts

The DSR web server provides local and login security through Administrator-defined user accounts. By selecting *Local Accounts* on the side menu bar, Administrators may add and delete users, define user preemption and access levels and change passwords.

**User access levels**

Accounts have two access levels: user and Administrator. Most switch management tasks can only be performed by persons with Administrator level access.

**Preemption levels**

The preemption level of users determine whether they may disconnect another user's serial or video (KVM) session with a target device.

DSR web server Administrators may specify the preemption level for user accounts when an account is created. The preemption level may be changed later.

Preemption levels range from 1-4, with 4 being the highest level. For example, a user with a preemption level of 4 may preempt other level 4 users, as well as those with a level 1, 2 or 3 setting.

**To change the default preemption level (Administrator only):**

1. Click *Appliance - Appliance Settings - Ports - OSCAR*.
2. Use the drop-down menu to select the new level and click the *Save* button.

**To add a new user account (Administrator only):**

1. On the side menu bar, select *Local Accounts*. The current user list will be displayed.
2. Click the *Add* button.
3. Enter the name and password of the new user in the blanks provided.

4. Select the preemption and access levels for the new user.
5. Click the *Save* button to complete the process.

**To delete a user account (Administrator only):**

1. On the side menu bar, select *Local Accounts*. The current user list will be displayed.
2. Click the box to the left of each account that you wish to delete, then click the delete button.

**To edit a user account (Administrator or active user only):**

1. On the side menu bar, select local accounts. The current user list will be displayed.
2. Click the name of the user you wish to edit. A user profile will appear.
3. Edit the user account as needed, then click *Save*.

## Managing device properties

### Viewing and changing appliance configuration information

The DSR2035/8035 switch can report most device properties directly through the DSR web browser.

---

**NOTE:** Users can view all appliance information, but only Administrators can change settings.

---

**Table 4.2: Viewing Appliance Information**

To do this:	Select this:
Display the unit's name or type	<i>Appliance - Overview</i>
Display a list of available target devices, their type and status	<i>Target Devices</i>
Enter, change or display the unit's network address, gateway address, subnet mask, MAC address, LAN speed, DHCP enable status or ICMP ping reply status	<i>Appliance - Appliance Settings - Network</i>
Display the unit's current firmware revision for application, boot and Video FPGA	<i>Appliance - Appliance Settings - Versions</i>
Display a list of the attached IQ module and its status	<i>Appliance - Appliance Settings - Ports - IQ modules</i>
Display a list of active KVM sessions and their duration	<i>Appliance - Appliance Settings - Sessions - Active</i>
Display a list of devices attached to the DSR2035/8035 switch	<i>Appliance - Appliance Settings - Sessions - Active</i>

**Table 4.2: Viewing Appliance Information (Continued)**

<b>To do this:</b>	<b>Select this:</b>
Display a list of devices attached to the DSR2035/8035 switch	<i>Appliance - Connections</i>
View the unit's part number, serial number and EID number	<i>Appliance - Properties - Identity</i>
Enter or display the unit's Site, Department and Location	<i>Appliance - Properties - Location</i>
Enable the inactivity timeout	<i>Appliance - Appliance Settings - Sessions - KVM settings</i> Then, click the <i>Enable Inactivity timeout</i> box.
Change the unit encryption level	<i>Appliance - Appliance Settings - Sessions - KVM settings</i> Then select the level of encryption desired for keyboard/mouse signals and then video signals.
Change the modem time-out settings	<i>Appliance - Appliance Settings - Ports - Modem</i>

## Power Controlling Target Devices

**NOTE:** You must have Administrator privileges to change SPC power control device settings.

If a target device is connected to an SPC power control device outlet, you may power up, power down or cycle (power target device down and then up) the target device using the DSR web server.

### To power up a target device:

1. Select *Appliance - Appliance Settings - Ports - SPC - Sockets* from the DSR Explorer window. The SPC sockets window will appear.
2. Select the checkbox to the left of the device that you wish to power.
3. Click the *On* button.

### To power down a target device:

1. Select *Appliance - Appliance Settings - Ports - SPC - Sockets* from the DSR Explorer window. The SPC sockets window will appear.
2. Select the checkbox to the left of the device that you wish to power down.
3. Click the *Off* button.

**To power cycle a target device:**

1. Select *Appliance - Appliance Settings - Ports - SPC - Sockets* from the DSR Explorer window. The SPC sockets window will appear.
2. Select the checkbox to the left of the device that you wish to cycle.
3. Click the *Cycle* button.

**To change the minimum on time, off time or wake up state:**

1. Select *Appliance - Appliance Settings - Ports - SPC - Sockets* from the DSR Explorer window.
2. Click the socket name that you wish to modify.
3. Use the drop down windows to alter the desired settings.
4. Click the *Save* button to exit.

**To view device details regarding the connected SPC device:**

Select *Appliance - Appliance Settings - Ports - SPC - Settings* from the DSR Explorer window.



## The Video Viewer

### About the Video Viewer Window

The Video Viewer is used to conduct a KVM session with the target devices attached to the DSR switch. When you connect to a device using the Video Viewer, the target device desktop appears in a separate window containing both the local and the target device cursor. The Video Viewer window supports either a 3- or 5-button mouse.

The DSR web server software uses a Java-based program to display the Video Viewer window.

---

**NOTE:** The DSR web server uses system memory to store and display images within Video Viewer windows. Each opened Video Viewer window requires additional system memory:

- An 8-bit color setting on the client PC requires 1.4 MB of memory per Video Viewer window.
- A 16-bit color setting requires 2.4 MB and a 32-bit color setting requires 6.8 MB.

Opening more than four simultaneous Video Viewer windows may affect system performance and is not recommended. If you attempt to open more Video Viewer windows than your system memory allows, you will receive an out-of-memory error and the requested Video Viewer window will not open.

---

If the device you are attempting to access is currently being viewed by another user, you will be prompted to preempt the other user if the preemption level is equal to or greater than theirs. An appliance administrator can disconnect the other user via the Active Session page. For more information, see the *To disconnect an active KVM session (Administrator only)* procedure on page 53 in Chapter 4.

### Video Viewer Minimum Requirements

The Video Viewer requires one of the following operating systems:

- Windows 2000 Workstation or Server with Service Pack 2
- Windows Server 2003 Standard, Enterprise or Web Edition
- Window NT 4.0 Workstation or Server with Service Pack 6a
- Windows XP Home Edition or Professional
- Red Hat Enterprise Linux

The Video Viewer client requires Java version 1.4.2\_04 or later when opened from Internet Explorer, Mozilla, Netscape or Firefox browsers. The DSR web server automatically downloads and installs the Video Viewer the first time it is opened.

---

**NOTE:** The DSR web server does not install the Java Resource Engine (JRE). The JRE is available from <http://www.sun.com> as a free download.

---

## Launching a KVM Session

---

**NOTE:** When using a non-proxied connection, video performance over a slower network connection may be less than optimal. Since certain color settings (such as Grayscale) use less network bandwidth than others (such as Best Color), changing the color settings can increase video performance. For optimal video performance over a slower network connection, Avocent recommends a color setting such as Grayscale/Best Compression or Low Color/High Compression. See the the *Adjusting color depth* section on page 65 for more information.

---

### To launch a KVM session from the DSR Explorer window:

1. Click on a device listed on the Target Devices screen to open the unit overview window.
2. Click the *KVM Session* link to open the Video Viewer in a new window.

### Session time-out

A remote session can time-out no activity has occurred in a Session window for a specified time. The session time-out value can be configured by using the Appliance KVM Session Settings window. If you specify a new time-out value, it will be used the next time the DSR web server is accessed.

### To enable, disable or configure the session time-out:

1. In the side menu, select *Unit Views - Appliance - Appliance Settings - Sessions - KVM Settings*.
2. Select the desired setting for the *Enable Activity Timeout* box.
3. If necessary, select the time limit for the inactivity timeout.



## Video Viewer Window Features

Figure 5.1 shows the Video Viewer window areas, and descriptions follow in Table 5.1 on page 62.

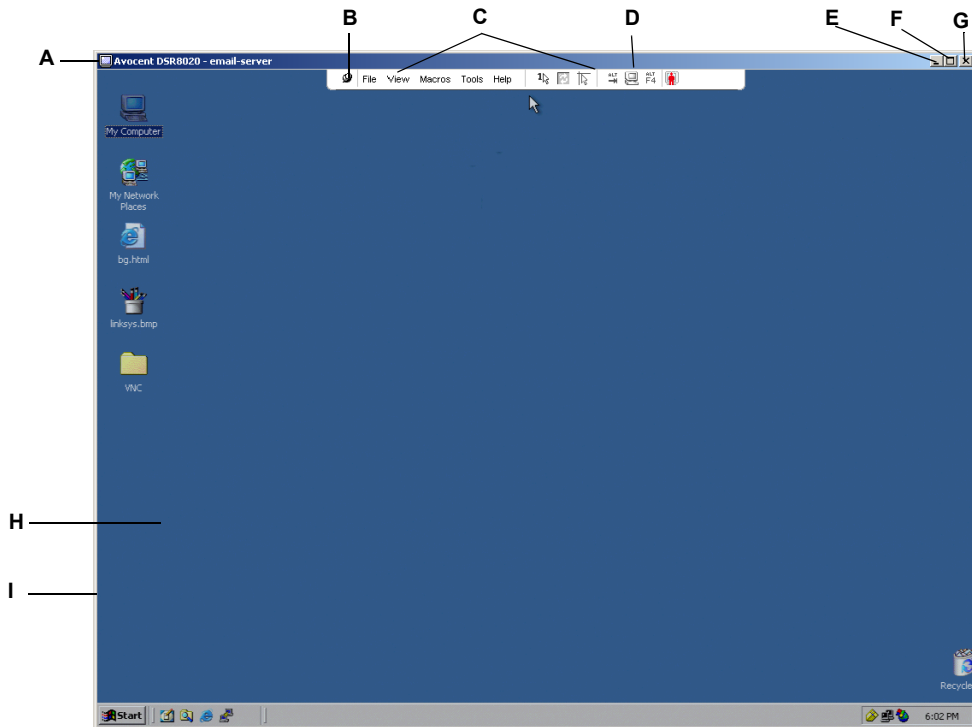


Figure 5.1: Video Viewer Window (Normal Window Mode)

**Table 5.1: Video Viewer Window Description**

Letter	Description
A	<b>Title Bar:</b> Displays the name of the server being viewed. When in Full Screen mode, the title bar disappears and the server name appears between the menu and toolbar.
B	<b>Thumbtack:</b> Locks the display of the menu and toolbar so that it is visible at all times.
C	<b>Menu and toolbar:</b> Enables you to access many of the features in the Video Viewer window. The menu and toolbar is in a show/hide state if the thumbtack has not been used. Place your cursor over the toolbar to display the menu and toolbar. Up to ten commands and/or macro group buttons can be displayed on the toolbar. By default, the Single Cursor Mode, Refresh, Automatic Video Adjust and Align Local Cursor buttons appear on the toolbar. For more information, see the the <i>Changing the toolbar</i> section on page 63 and the the <i>Using Macros</i> section on page 72.
D	<b>Macro buttons:</b> Commonly used keyboard sequences that can be sent to the target device.
E	<b>Minimize button:</b> Minimizes the display of the Video Viewer window into the task bar at the bottom of the local computer.
F	<b>Maximize button:</b> Changes the window to Full Screen mode, which expands the accessed device desktop to fill the entire screen. Expanding the window causes the following to occur: <ul style="list-style-type: none"> <li>• The title bar disappears.</li> <li>• The server name appears between the menu and toolbar.</li> <li>• The Maximize button changes to a Normal Window Mode button and appears on the toolbar. Clicking the button toggles the Video Viewer window to Normal Window mode.</li> <li>• The Close button appears on the toolbar.</li> </ul>
G	<b>Close button:</b> Closes the Video Viewer window. <sup>a</sup>
H	<b>Accessed device desktop:</b> Interacts with your device through this window.
I	<b>Frame:</b> Resizes the Video Viewer window by clicking and holding on the frame.

a. The Close button may not be present for all operating systems.

## Changing the toolbar

You can choose the amount of elapsed time before the toolbar hides in the Video Viewer window when it is in show/hide state (that is, not locked in place by the thumbtack).

### To specify a toolbar hide time:

1. Select *Tools - Session Options* from the Video Viewer window menu.  
-or-  
Click the *Session Options* button.

The Session Options dialog box appears.

2. Click the *Toolbar* tab.
3. Use the arrow keys to specify the number of elapsed seconds prior to hiding the toolbar.
4. Click *OK* to save your changes and close the dialog box.

## Setting the window size

---

**NOTE:** The *View - Scaling* command is not available if the Video Viewer window is in Full Screen mode or to non-primary users of a shared session.

---

When the DSR web server is used for the first time, any open Video Viewer windows display at a resolution of 1024 x 768 until the user changes the value. Each Video Viewer window can be set to a different resolution.

The DSR web server automatically adjusts the display if the window size changes during a session as long as autoscaling is enabled. If the target device resolution changes any time during a session, the display adjusts automatically.

### To change the Video Viewer window resolution:

1. Select the *View - Scaling* command.
2. Click on the desired resolution.

## Adjusting the view

Using menus or Task buttons in the Video Viewer window, you can do the following:

- Align the mouse cursors.
- Refresh the screen.
- Enable or disable Full Screen mode. When Full Screen mode is enabled, the image adjusts to fit the desktop up to a size of 1024 x 768. If the desktop has a higher resolution, the following occurs:
  - The full-screen image is centered in the desktop, and the areas surrounding the Video Viewer window are black.
  - The menu and toolbar are locked so that they are visible at all times.
- Enable automatic, full or manual scaling of the session image:
  - With full scaling, the desktop window remains fixed and the device image scales to fit the window.
  - With automatic scaling, the desktop window is sized to match the resolution of the server being viewed.
  - With manual scaling, a drop-down menu of supported image scaling resolutions is displayed.
- Change the color depth of the session image.

### To align the mouse cursors:

Click the *Align Local Cursor* button in the Video Viewer window toolbar. The local cursor should align with the cursor on the remote device.

---

**NOTE:** If cursors drift out of alignment, turn off mouse acceleration in the attached device.

---

### To refresh the screen:

Click the *Refresh Image* button in the Video Viewer window.

-or-

Select *View - Refresh* from the Video Viewer window menu.

The digitized video image is completely regenerated.

**To enable or disable full screen mode:**

1. To enable Full Screen mode, click the *Maximize* button.

-or-

Select *View - Full Screen* from the Video Viewer window menu.

The desktop window disappears and only the accessed device desktop is visible. The screen resizes up to a maximum of 1024 x 768. If the desktop has a higher resolution, then a black background surrounds the full screen image. The floating toolbar appears.

-or-

2. To disable Full Screen mode, click the *Full Screen Mode* button on the floating toolbar to return to the desktop window.

**To enable automatic, full or manual scaling:**

1. To enable automatic scaling, select *View - Scaling* from the Video Viewer window menu. The device image scales automatically.

-or-

2. To enable full scaling, select *View - Scaling* from the Video Viewer window menu. The device image scales automatically to the resolution of the server being viewed.

-or-

3. To enable manual scaling:

- a. Select *View - Scaling* from the Video Viewer window menu.

- b. Choose the dimension to scale the window. Available manual scaling sizes are as follows:

1024 x 768	768 x 576
960 x 720	704 x 528
896 x 672	640 x 480
832 x 624	

**Adjusting color depth**

The DSR switch Dambrockas Video Compression<sup>®</sup> (DVC) algorithm enables users to adjust the number of viewable colors in a remote session window. You can choose to display more colors for the best fidelity or fewer colors to reduce the volume of data transferred on the network.

Video Viewer windows can be viewed using the Best Color Available (slower updates), Best Compression (fastest updates), a combination of Best Color and Best Compression or in Grayscale.

You can specify the color depths of individual ports and channels by selecting the *View - Color* command in a remote session window. These settings are saved individually per channel.

## Additional video adjustment

Generally, the Video Viewer window automatic adjustment features optimizes the video for the best possible view. However, users can fine-tune the video with the help of Avocent Technical Support by selecting the *Tools - Manual Video Adjust* command in the Video Viewer window menu or clicking the *Manual Video Adjust* button. This displays the Manual Video Adjust dialog box. Video adjustment is a per target setting.

Users can also verify the level of packets per second required to support a static screen by observing the packet rate located in the lower left-hand corner of the dialog box.

### To manually adjust the video quality of the window:

**NOTE:** The following video adjustments should be made only on the advice and with the help of Avocent Technical Support.

1. Select *Tools - Manual Video Adjust* from the Video Viewer window menu.  
-or-  
Click the *Manual Video Adjust* button.

The Manual Video Adjust dialog box appears. Figure 5.2 shows the dialog box. Table 5.2 on page 67 describes each element of the dialog box.

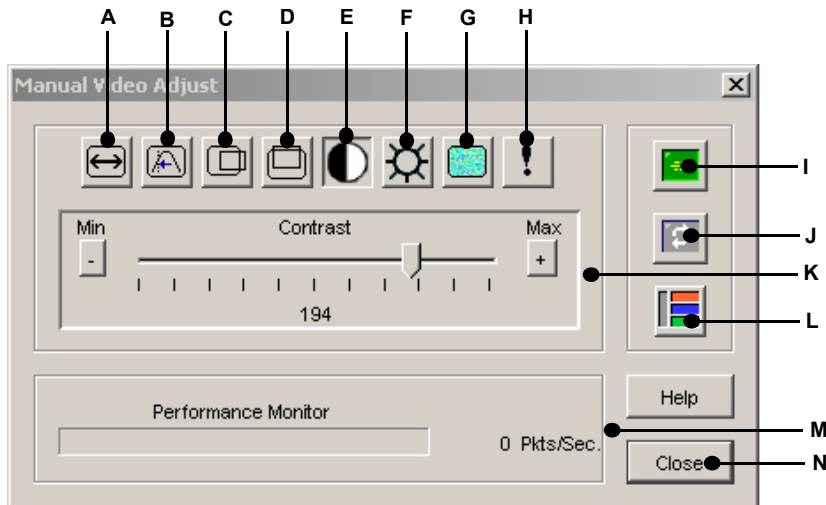


Figure 5.2: Manual Video Adjust Dialog Box

**Table 5.2: Manual Video Adjust Dialog Box Descriptions**

Letter	Description	Letter	Description
<b>A</b>	Image Capture Width	<b>H</b>	Pixel Noise Threshold
<b>B</b>	Pixel Sampling/Fine Adjust	<b>I</b>	Automatic Video Adjustment
<b>C</b>	Image Capture Horizontal Position	<b>J</b>	Refresh Image
<b>D</b>	Image Capture Vertical Position	<b>K</b>	Adjustment bar
<b>E</b>	Contrast	<b>L</b>	Video Test Pattern
<b>F</b>	Brightness	<b>M</b>	Performance Monitor
<b>G</b>	Block Noise Threshold	<b>N</b>	Close button

2. Click the icon corresponding to the feature you wish to adjust.
3. Move the Contrast slider bar and then fine-tune the setting by clicking the *Min* (-) or *Max* (+) buttons to adjust the parameter for each icon pressed. The adjustments display immediately in the Video Viewer window.
4. When finished, click *Close* to exit the Manual Video Adjust dialog box.

### **Image capture width, pixel sampling/fine adjust, image capture horizontal position and image capture vertical position**

The Image Capture Width, Pixel Sampling/Fine Adjust, Image Capture Horizontal Position and Image Capture Vertical Position adjustments affect how the target video is captured and digitized and are seldom changed.

The image capture parameters are automatically changed by the Automatic Adjustment function. A special image is required on the target in order to make accurate adjustments independently.

### **Contrast and brightness**

If the image in the Video Viewer window is too dark or too light, select *Tools - Automatic Video Adjust* or click the *Automatic Video Adjust* button. This command is also available in the Video Adjustments dialog box. In most cases, this corrects video problems.

In cases where clicking on Auto Adjust several times does not set the contrast and brightness as desired, adjusting the contrast and brightness manually can help. Increase the brightness. Do not go more than 10 increments before moving the contrast. Generally, the contrast should be moved very little.

## Detection thresholds

In some cases, noise in the video transmission keeps the packets/sec count up, which is indicated by little dots changing in the area of the cursor when it is moved. Varying the threshold values may result in “quieter” screens and can improve cursor tracking.

You can modify Noise Threshold and Priority Threshold values if you are using standard video compression. You can also modify Block Noise Threshold and Pixel Noise Threshold values. You can restore default threshold values by clicking *Auto Adjust Video*.

## Block noise threshold and pixel noise threshold

The Block Noise Threshold and Pixel Noise Threshold values set the minimum color levels in terms of changed video blocks and pixels per thousand that are allowed.

- The Block Noise Threshold sets the minimum color change that occurs in a single video block. Increasing the value reduces the network bandwidth. Decreasing the value makes the size of these artifacts smaller.
- The Pixel Noise Threshold sets the minimum color change in a single pixel. Decreasing the value reduces the number of low-contrast artifacts, but increases network bandwidth.

See the the *Adjusting the view* section on page 64 for information about changing the color depth.

## Automatic video adjustment

---

**NOTE:** You can also select *Tools - Automatic Video Adjust* from the Video Viewer window menu or click the *Automatic Video Adjust* toolbar icon to automatically adjust the video.

---

In most cases, you do not need to alter the Video Settings from the default. The system automatically adjusts and uses the optimal video parameters. The DSR web server performs best when the video parameters are set such that no (0) video packets are transmitted for a static screen.

You can easily adjust your video parameters to ideal settings by clicking on the *Auto Adjust Video* button in the Manual Video Adjust dialog box.

---

**NOTE:** A green screen with yellow lettering may appear during auto-adjustment.

---

## Refresh image

---

**NOTE:** You can also select *View - Refresh* from the Video Viewer window menu to refresh the image.

---

Clicking the *Refresh Image* button in the Manual Video Adjust dialog box completely regenerates the digitized video image.

## Video test pattern

Clicking the *Video Test Pattern* button in the Manual Video Adjust dialog box toggles a display of a video test pattern. Click the *Video Test Pattern* button again to toggle back to a normal video image.



## Adjusting mouse options

The Video Viewer window mouse options affect cursor type, cursor mode, scaling, alignment and resetting. Mouse settings are device-specific; that is, they may be set differently for each device.

---

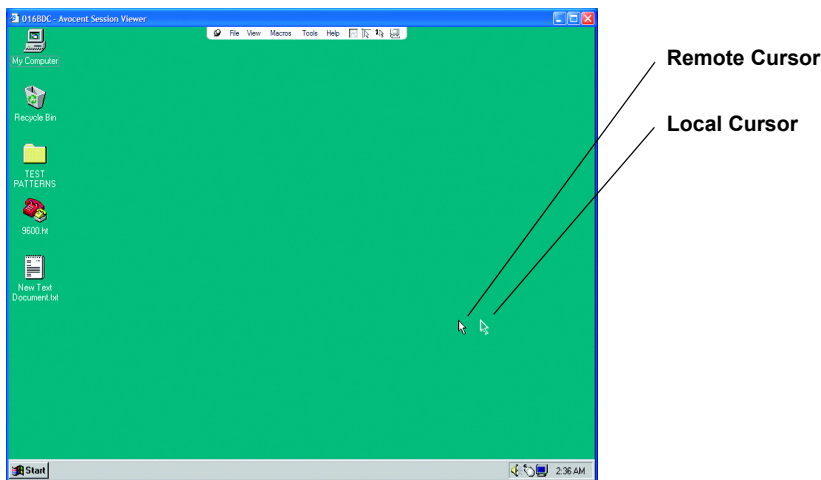
**NOTE:** If the device does not support the ability to disconnect and reconnect the mouse (almost all newer PCs do), then the mouse will become disabled and the device will have to be rebooted.

---

### Cursor Type

The Video Viewer window offers five appearance choices for the local mouse cursor. You can also choose no cursor or the default cursor.

In Single Cursor mode, the display of the local (second) cursor in the Video Viewer window turns off and only the target device mouse pointer is visible. The only mouse movements that appear are those of the target device remote cursor. Use Single Cursor mode when there is no need for a local cursor. Figure 5.3 shows both the Remote Cursor and the Local Cursor displayed in the Video Viewer window.



**Figure 5.3: Video Viewer Window with Local and Remote Cursors Displayed**

The cursor mode status of the Video Viewer window displays in the title bar, including the keystroke that will exit Single Cursor mode. You can define the keystroke that will exit Single Cursor mode in the Session Options dialog box.

---

**NOTE:** When using a device that captures keystrokes before they reach the client, you should avoid using those keys to restore the mouse pointer.

---

**To enter single cursor mode:**

Select *Tools - Single Cursor Mode* from the Video Viewer window menu.

-or-

Click the *Single Cursor Mode* button.

The local cursor does not appear and all movements are relative to the target device.

**To select a key for exiting single cursor mode:**

1. Select *Tools - Session Options* from the Video Viewer window menu.

-or-

Click the *Session Options* button.

The Session Options dialog box appears.

2. Click the *Mouse* tab.

3. Select a terminating keystroke from the drop-down menu in the Single Cursor mode area.

4. Click *OK* to save settings.

When you enable Single Cursor mode, you can press the specified key to return to Regular Desktop mode.

**To exit single cursor mode:**

Press the key on the keyboard that is identified in the title bar.

**To change the mouse cursor setting:**

1. Select *Tools - Session Options* from the Video Viewer window menu.

-or-

Click the *Session Options* button.

The Session Options dialog box appears.

2. Click the *Mouse* tab.

3. Select a mouse cursor type in the Local Cursor panel.

4. Click *OK* to save settings.

**Mouse scaling**

You can choose among three preconfigured mouse scaling options or set your own custom scaling. The preconfigured settings are Default (1:1), High (2:1) or Low (1:2):

- In a 1:1 scaling ratio, every mouse movement on the desktop window sends an equivalent mouse movement to the server.
- In a 2:1 scaling ratio, the same mouse movement sends a 2X mouse movement.
- In a 1:2 scaling ratio, the value is 1/2X.

**To set mouse scaling:**

1. Select *Tools - Session Options* from the Video Viewer window menu.

-or-

Click the *Session Options* button.

The Session Options dialog box appears.

2. Click the *Mouse* tab.
3. To use one of the preconfigured settings, check the appropriate radio button.

-or-

To set custom scaling:

- a. Click the *Custom* radio button to enable the X and Y fields.
- b. Type a mouse scaling value in the X and Y fields. For every mouse input, the mouse movements are multiplied by the respective X and Y scaling factors. Valid input range is 0.25-3.00.

**Mouse alignment and synchronization**

Because the DSR web server cannot get constant feedback from the mouse, there are times when the mouse on the DSR switch may lose sync with the mouse on the host system. If your mouse or keyboard no longer responds properly, you can align the mouse to re-establish proper tracking.

Alignment causes the local cursor to align with the cursor on the remote server. Resetting causes the appliance to simulate a mouse and keyboard reconnect at the device as if you had disconnected and then reconnected them.

**To realign the mouse:**

Click the *Align Local Cursor* button in the Video Viewer window toolbar.

## Using Keyboard Pass-through

Keystrokes that a user enters when using a Video Viewer window may be interpreted in two ways, depending on the screen mode of the Video Viewer window.

- If a Video Viewer window is in Full Screen mode, all keystrokes and keyboard combinations except **Ctrl-Alt-Del** are sent to the remote server being viewed.
- If a Video Viewer window is in Regular Desktop mode, Keyboard Pass-through mode can be used to control whether the remote server or local computer recognizes certain keystrokes or keystroke combinations.

Keyboard pass-through must be specified using the Session Options dialog box. When enabled, keyboard pass-through sends all keystrokes and keystroke combinations except **Ctrl-Alt-Del** to the

remote server being viewed when the Video Viewer window is active. When the local desktop is active, keystrokes and keystroke combinations entered by the user affect the local computer.

---

**NOTE:** The **Ctrl-Alt-Delete** keyboard combination can be sent only to a remote server by using a macro.

---

**NOTE:** The Japanese keyboard **ALT-Han/Zen** keystroke combination is always sent to a remote server regardless of the screen mode or keyboard pass-through setting.

---

### To specify keyboard pass-through:

1. Select *Tools - Session Options* from the Video Viewer window menu.  
-or-  
Click the *Session Options* button.  
  
The Session Options dialog box appears.
2. Click the *General* tab.
3. Select *Pass-through all keystrokes in regular window mode*.
4. Click *OK* to save setting.

## Using Macros

The DSR web server comes pre-configured with macros for both the Windows and Sun platforms.

### To send a macro:

Select *Macros - <desired macro>* from the Video Viewer window menu.

-or-

Select the desired macro from the buttons available on the Video Viewer menu.

## Saving the View

You can save the display of a Video Viewer either to a file or to the clipboard for pasting into a word processor or other program.

### To capture the Video Viewer window to a file:

1. Select *File - Capture to File* from the Video Viewer window menu.  
-or-  
Click the *Capture to File* button.  
  
The Save As dialog box appears.
2. Enter a filename and choose a location to save the file.
3. Click *Save* to save the display to a file.

**To capture the Video Viewer window to your clipboard:**

Select *File - Capture to Clipboard* from the Video Viewer window menu.

-or-

Click the *Capture to Clipboard* button.

The image data is saved to the clipboard.

## **Closing a Video Viewer Window Session**

**To close a Video Viewer window session:**

Select *File - Exit* from the Video Viewer window.



## Terminal Operations

### The Console Menu

Each DSR2035/8035 switch may be configured at the appliance level through the Console menu interface accessed through the SETUP port on the back of the switch. All terminal commands are accessed through a terminal or PC running terminal emulation software.

---

**NOTE:** This is NOT the recommended method for setting options for the DSR2035/8035 switch. The preferred method is to make all configuration settings in the DSView Server software. See the *DSView Installer/User Guide* for more information.

---

### Network Configuration

#### To configure network settings using the Console menu:

1. When you power up your DSR2035/8035 switch, the switch initializes for approximately one minute. After it completes initialization, press any key on the terminal or on the PC running the terminal emulation software to access the Console menu interface shown in Figure 6.1 on page 76.

---

**NOTE:** The terminal may be connected at any time, even when the switch is already powered.

---

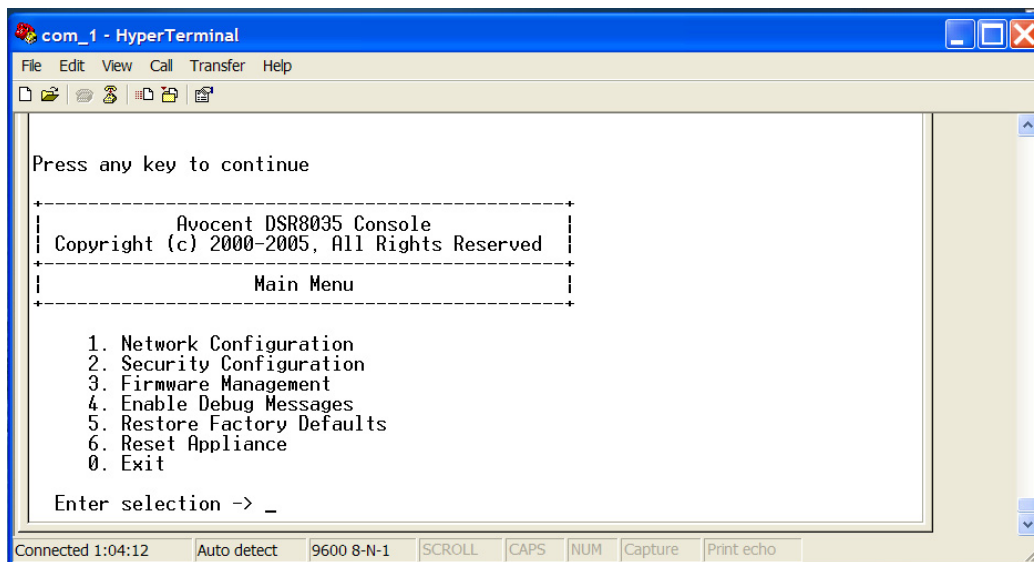


Figure 6.1: Console Main Menu

2. Once the Console Main menu displays, type **1** and press **Enter** to access the Network Configuration menu shown in Figure 6.2.

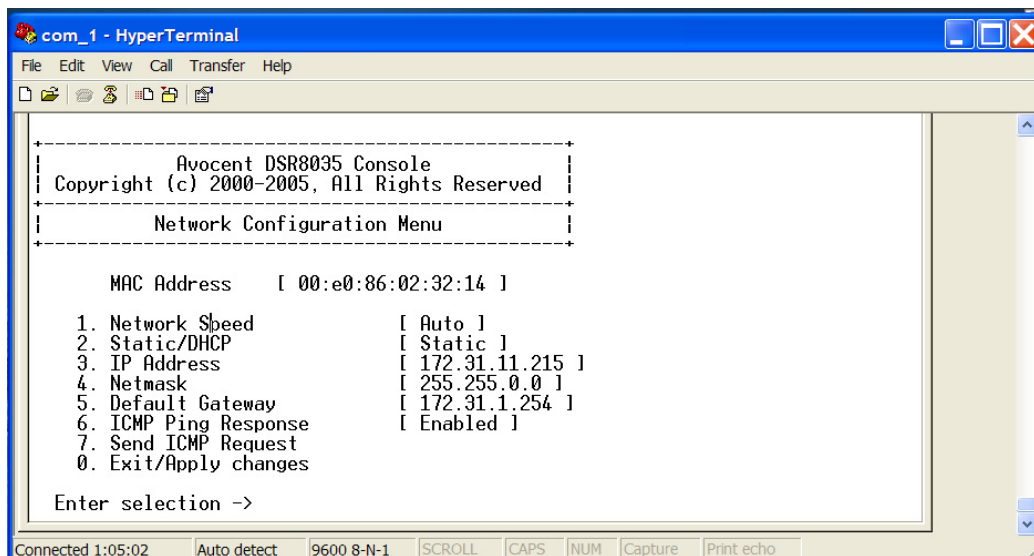


Figure 6.2: Network Configuration Menu



3. Type **1** and press **Enter** to set your network speed. When possible, you should set your connection manually without relying on the auto negotiate feature. After you press **Enter**, you will be returned to the Network Configuration menu.
4. Type **2** and press **Enter** to specify whether you are using a static or Dynamic Host Configuration Protocol (DHCP) address.

A static IP address may be used to provide a user-defined IP address, netmask and default gateway for the DSR2035/8035 switch. Avocent recommends using a static IP address for ease of configuration.

DHCP is a protocol that automates the configuration of TCP/IP-enabled computers. When DHCP is selected, the IP Address, Netmask and Default Gateway settings are automatically assigned to the DSR2035/8035 switch and may not be modified by a DS user.

If you are using the DHCP option, please configure your DHCP server to provide an IP address to the DSR2035/8035 switch and then skip step 5.

5. Select the remaining options from the Network Configuration menu to finish the configuration of your DSR2035/8035 switch with an IP address, netmask, default gateway and ping response.
6. Type **0** (zero) and press **Enter** to return to the Console Main menu.

## Other Console Main Menu Options

Besides the Network Configuration option, the Console Main menu of the DSR2035/8035 switch features the following menu items: Security Configuration, Firmware Management, Enable Debug Messages, Restore Factory Defaults, Reset Appliance and Exit. Each is discussed in this section.

### Security configuration

The DSR2035/8035 switch contains an internal database that may be used by the DSR Remote Operations software, the local port or the CONSOLE port if the DSView software server is unavailable.

The Security Configuration menu contains the following options:

- Local User Accounts: Add, edit or delete users to/from the DSR2035/8035 switch database.
- Console Password: Enable or disable using security for the console (access requires an Admin account).
- Reset Certificates: Reset the certificate used by the DSView software system.
- Secure Mode: Enable or disable the DSView software Secure mode.

## Local user accounts

---

**NOTE:** When you use the options to add, edit or delete a user, a list of existing users will appear. You may enter **N** to display the next page of users in the database or enter **P** to go back to the previous page of users.

---

### To add a user to the DSR2035/8035 switch database:

1. Type **2** and press **Enter** to access the Security Configuration menu option.
2. Type **1** and press **Enter** to access the Local User Accounts menu option. A list of users already within the database will appear.
3. Type **A**.
4. When prompted, type the username you wish to add and press **Enter**.
5. You will be prompted to type a password for the user. Type a password and press **Enter**.
6. You will be prompted to re-type the password. Type the password again and press **Enter**.
7. Enter **0** (zero) to exit.

### To rename a user in the DSR2035/8035 switch database:

1. From the Console Main menu, type **2** and press **Enter** to access the Security Configuration menu option.
2. Type **1** and press **Enter** to access the Local User Accounts menu option. A list of users already within the database will appear.
3. Type **E**.
4. You will be prompted to enter the number of the user you wish to rename. Type the user's number then press **Enter**.
5. Type a new username and press **Enter**.
6. Enter the password for the user, then re-enter the password to confirm it.
7. Enter **0** (zero) to exit.

### To remove a user from the DSR2035/8035 switch database:

1. From the Console Main menu, type **2** and press **Enter** to access the Security Configuration menu option.
2. Type **1** and press **Enter** to access the Local User Accounts menu option. A list of users already within the database will appear.
3. Type **D**.
4. You will be prompted to enter the number of the user you wish to delete. Type the user's number then press **Enter**.
5. You will be prompted to confirm deletion of the user from the DSR2035/8035 switch database. Type **Y** and press **Enter** to remove the user.
6. Enter **0** (zero) to exit.

## Console password

If this is enabled, access to the switch's Console Main menu will require the user to log in.

## Reset certificates

This menu option enables you to clear the certificate sent by the DSView software to the DSR2035/8035 switch.

When a DSR2035/8035 switch is added to a server running DSView software, a certificate is downloaded from that server to the DSR2035/8035 switch automatically. That certificate is replicated across all servers running DSView software operating in a predefined system. Thereafter, any of the servers in that system will be able to communicate with the DSR2035/8035 switch.

If the server running DSView software cannot contact the DSR2035/8035 switch to add the certificate, an error message is displayed and the DSR2035/8035 switch is not added to the database.

## Security mode

The DSR2035/8035 switch operates in one of two modes: Security disabled or Security enabled.

In Security disabled mode, the DSR2035/8035 switch allows any server running DSView software to communicate with it.

In Security enabled mode, an initial server running DSView software is allowed to download a certificate to the switch. If that server is part of a system that replicates certificates, it will pass the certificate to the other servers in that certificate replication system. Thereafter, all servers in that system will be allowed to access the DSR2035/8035 switch. All servers that are not part of that system will be locked out.

When the DSR2035/8035 switch is removed from the DSView software database, the certificate is removed from the DSR2035/8035 switch. This enables you to move the DSR2035/8035 switch from one certificate replication system to another. The certificate can also be removed using the Console menu accessed via the SETUP port on the DSR2035/8035 switch. See the *Reset certificates* section.

See the *DSView Installer/User Guide* for more information on software security.

## Firmware management

This menu contains the FLASH Download selection. For more information, see *Appendix A*.

## Enable debug messages

This menu option turns on console status messages. Because this can significantly reduce performance, you should only enable debug messages when instructed to do so by Avocent Technical Support. When you are finished viewing the messages, press any key to exit this mode.

## **Restore factory defaults**

This menu option will restore all switch options to the default settings.

## **Reset appliance**

This menu option allows you to execute a soft reset of the DSR2035/8035 switch.

## **Exit**

This menu selection will return you to the ready prompt. If the Console menu interface password is enabled, you must exit the Console Main menu so that the next user will be prompted with the Username and Password login screen.

## APPENDICES

### Appendix A: FLASH Upgrades

The DSR2035/8035 switch FLASH upgrade feature allows you to update your appliance with the latest firmware available. This update can be performed using the DSView software or using a Trivial File Transfer Protocol (TFTP) server.

After the FLASH memory is reprogrammed with the upgrade, the DSR2035/8035 switch performs a soft reset, which terminates all DSRIQ module sessions. A target device experiencing a DSRIQ module firmware update may not display, or may display as disconnected. The target device will appear normally when the FLASH update is completed.

---

**NOTE:** During an upgrade, the DSRIQ module status indicator in the OSCAR interface Main dialog box is yellow.

---



---

**CAUTION:** Disconnecting a DSRIQ module during a firmware update or cycling power to the target device will render the module inoperable and require the DSRIQ module to be returned to the factory for repair.

---

#### To upgrade the DSR2035/8035 switch firmware using the DSView software:

The preferred method for updating the firmware is to use the DSView software. See the *DSView Installer/User Guide* for detailed instructions.

#### To upgrade the DSR2035/8035 switch firmware using the Console menu interface:

---

**NOTE:** If you do not have a TFTP server, you can find several shareware and freeware programs on the Internet that you can download and install.

---

1. Visit <http://www.avocent.com/support> and download the latest FLASH firmware from Avocent.
2. Save the FLASH upgrade file to the appropriate directory on the TFTP server.
3. Use the supplied ribbon cable and RJ-45 to DB9 (female) adaptor to connect a terminal or PC running terminal emulation software (such as HyperTerminal) to the SETUP port on the back panel of the DSR2035/8035 switch. The terminal should be set to 9600 bps, 8 bits, 1 stop bit, no parity and no flow control.
4. If the DSR2035/8035 switch is not on, turn it on now. After approximately one minute, press any key to access the Console Main menu.
5. Select the *Firmware Management* option from the Console Main menu.

---

**NOTE:** The current version of your firmware will be displayed on the Firmware Management menu.

---

6. Type **1** and press **Enter** to access FLASH Download.
7. Type the IP address of your TFTP server and press **Enter**.

8. Enter the name of the file that you downloaded from the Avocent web site.
9. Confirm the TFTP download by typing a **y** or **yes** and pressing **Enter**.
10. The DSR2035/8035 switch will begin the FLASH upgrade process. On-screen indicators will display the upgrade progress. When the upload is complete, the DSR2035/8035 switch will reset and upgrade the internal subsystems.
11. Once the upgrade is complete, the login screen will appear.

---

**NOTE:** If the green LED on the back panel of the switch blinks continuously, the switch is in recovery mode.

---

**To recover from a failed FLASH upgrade:**

1. Visit <http://www.avocent.com/support> and download the latest FLASH firmware from Avocent.
2. Save the FLASH upgrade file to the appropriate directory on the TFTP server.
3. Set up the TFTP server with the server IP address 10.0.0.3.
4. Rename the download file to DSR8035.fl and place it into the TFTP root directory of the TFTP server.
5. If the DSR switch is not on, turn it on now.
6. The recovery process should start automatically.

## Appendix B: Using DSView Software Over a Modem Connection

An external modem may be attached to the DSR2035/8035 switch. This modem may be used to access the switch when an Ethernet connection is not available.

A modem/PPP dial-up connection must be established before the remote operation is enabled. The dial-up connection options should be set to 115,200 bps, 8 bits, 1 stop bit, no parity and enabled hardware flow control.

### Before you begin

Perform the following actions before using the DSR Remote Operations software:

- Ensure that the DSR2035/8035 switch is configured. See Chapter 2 for more information.
- Ensure that DSR2035/8035 switch users have been added to the DSR2035/8035 switch internal database. If the DSView Server software is not available, the switch database is used for authentication. If neither are available, authentication cannot be performed for the DSR2035/8035 switch. See Chapter 4 for more information.
- Ensure that an external modem is attached to the DSR2035/8035 switch MODEM port. The modem should have auto-answer turned off (typically a modem's default setting).
- Ensure that your client PC contains dial-up software and that the software is configured properly. See your operating system documentation for more information.

### Establishing a DSR Remote Operations software connection

This is explained in detail in the *DSView Installer/User Guide*.

## Appendix C: Using DSRIQ-SRL Modules

The DSRIQ-SRL module is a serial-to-VGA converter which permits VT100-capable devices to be viewed from the DSR2035/8035 switch local port or by using the DSView software. The actual serial data is not accessed, but is merely displayed. All serial data coming from the target device is displayed in a VT100 window, placed into a video buffer and sent to the DSR2035/8035 switch as though it came from a VGA target. Likewise, keystrokes entered on a keyboard are sent to the attached device as though they were typed upon a VT100 terminal.

### DSRIQ-SRL module modes

The following modes can be accessed from the DSRIQ-SRL module:

- On-Line: This mode enables you to send and receive serial data.
- Configuration: This mode enables you to specify DSR2035/8035 switch communication parameters, the appearance of the Terminal Applications menu and key combinations for specific actions and macros.
- History: This mode enables you to review serial data.

### Configuring the DSRIQ-SRL module

---

**NOTE:** The DSRIQ-SRL module is a DCE device and only supports VT100 terminal emulation.

---

Pressing **Ctrl-F8** will activate the Configuration screen of the DSRIQ module's Terminal Applications menu, which enables you to configure your DSRIQ-SRL module.

---

**NOTE:** When any Terminal Applications menu is active, pressing **Enter** saves changes and returns you to the previous screen. Pressing **Escape** returns you to the previous screen without saving changes.

---

Within the Terminal Applications menu's Configuration screen, you can modify the following options:

- Baud Rate: This option allows you to specify the serial port communications speed. Available options are 300, 1200, 2400, 9600, 19,200, 34,800, 57,600 or 115,200 bps. The default value is 9600.
- Parity: This option allows you to specify the serial port's communications parity. Available options are EVEN, ODD or NONE. The default value is NONE.
- Flow Control: This option allows you to specify the type of serial flow control. Available options are NONE, XOn/XOff (software) and RTS/CTS (hardware). The default value is NONE. If you select a bps rate of 115,200, the only available flow control is RTS/CTS (hardware).
- DSR/CD Mode: This option allows you to control how the DSR2035/8035 switch and CD lines operate. Available options are Always on and Toggle. When in Toggle mode, DSR and CD lines are turned off for one-half second and then turned on each time a module is selected or deselected. The default value is Always on.



- **Enter Sends:** This option enables you to specify the keys that are transmitted when **Enter** is pressed. Available options are <CR> (Enter), which moves the cursor to the left side of the screen, or <CR><LF> (Enter-Linefeed), which moves the cursor to the left side of the screen and down one line.
- **Received:** This option enables you to specify how the module translates a received **Enter** character. Available options are <CR> (Enter) or <CR><LF> (Enter-Linefeed).
- **Background:** This option changes the screen's background color. The currently-selected color displays in the option line as it is changed. Available colors are Black, Light Grey, Yellow, Green, Teal, Cyan, Blue, Dark Blue, Purple, Pink, Orange, Red, Maroon and Brown. The default color is Black. This value cannot be identical to the Normal Text or Bold Text value.
- **Normal Text:** This option changes the screen's normal text color. The currently-selected color displays in the option line as it is changed. Available colors are Grey, Light Grey, Yellow, Green, Teal, Cyan, Blue, Dark Blue, Purple, Pink, Orange, Red, Maroon and Brown. The default color is Grey. This value cannot be identical to the Bold Text or Background value.
- **Bold Text:** This option changes the screen's bold text color. The currently-selected color displays in the option line as it is changed. Available colors are White, Yellow, Green, Teal, Cyan, Blue, Dark Blue, Purple, Pink, Orange, Red, Maroon, Brown and Light Grey. The default color is White. This value cannot be identical to the Normal Text or Background value.
- **Screen Size:** This option allows you to specify the screen's text width size. Available values are widths of 80 columns or 132 columns. The length for both widths is 26 lines.

The following Terminal Application menu's Configuration screen options enable you to define the function keys that will perform a selected action. To specify a new function key, press and hold the **Ctrl** key, then press the function key that you want to associate with the action. For example, if you want to change the Configuration (Config) Key Sequences option from <CTRL-F8> to <CTRL-F7>, press and hold the **Ctrl** key and then press **F7**.

- **Config Key Sequences:** This option allows you to define the key combination that causes the Terminal Application menu's Configuration screen to appear. The default key sequence is **Ctrl-F8**.
- **On-Line Key Sequence:** This option allows you to define the key sequence that displays the On-Line mode. The default key sequence is **Ctrl-F10**.
- **Help Key Sequence:** This option allows you to define the key combination that displays the Help System screen. The default key sequence is **Ctrl-F1**.
- **History Key Sequence:** This option allows you to define the key combination that enables History mode. The default key sequence is **Ctrl-F9**.
- **Clear History Key Sequence:** This option allows you to define the key combination that clears the history buffer while in History mode. The default key sequence is **Ctrl-F11**.
- **Break Key Sequence:** This option allows you to configure the key combination that generates a break condition. The default key sequence is **Alt-B**.

**To configure a DSRIQ-SRL module:**

1. Press **Ctrl-F8**. The Configuration Screen will appear.
2. Select a parameter to change. You can navigate the Configuration Screen using the **Up Arrow** and **Down Arrow** keys.
3. Modify the selected value using the **Left Arrow** and **Right Arrow** keys.
4. Repeat steps 2 and 3 to modify additional values.
5. Press **Enter** to save your changes and exit the Configuration Screen.

-or-

Press **Escape** to exit the Configuration Screen without saving the changes.

**Creating a DSRIQ-SRL module macro**

Pressing the **Page Down** key when the Terminal Applications menu's Configuration screen is displayed will provide access to the Macro Configuration screen. The DSRIQ-SRL module can be configured with up to 10 macros. Each macro can be up to 128 characters in length.

**To create a macro:**

1. Select the DSRIQ-SRL module you wish to configure and press **Ctrl-F8** to activate the Terminal Applications menu's Configuration screen.
2. When the Terminal Applications menu appears, press **Page Down** to view the Macro Configuration screen. The Macro Configuration screen shows the 10 available macros and the associated key sequences, if any, for each.
3. Using the **Up Arrow** and **Down Arrow** keys, scroll to an available macro number and highlight the listed keystroke sequence. Type the new macro keystroke sequence over the default. Any combination of **Ctrl** or **Alt** and a single key may be used. When you have finished entering the keystroke sequence that will activate the new macro, press the **Down Arrow** key.
4. On the line below the macro keystroke sequence you just entered, type the keystroke sequence that you wish the macro to perform.
5. Repeat steps 3 and 4 to configure additional macros.
6. When finished, press **Enter** to return to the previous screen.

**Using History mode**

History mode allows you to examine the contents of the history buffer, which contains the events that have occurred.

The DSRIQ-SRL module maintains a buffer containing 240 lines minimum, or 10 screens, of output. When the history buffer is full, it will add new lines at the bottom of the buffer and delete the oldest lines at the top of the buffer.

---

**NOTE:** The Config Key Sequence, On-Line Key Sequence and Clear History Key Sequence used in the following procedure are the default values. These key combinations can be changed using the Terminal Applications menu.

---

**To use History mode:**

1. Press **Ctrl-F9**. The mode will display as History.
2. Press one of the following key combinations to perform the indicated action:
  - **Home**: Move to the top of the buffer.
  - **End**: Move to the bottom of the buffer.
  - **Page Up**: Move up one buffer page.
  - **Page Down**: Move down one buffer page.
  - **Up Arrow**: Move up one buffer line.
  - **Down Arrow**: Move down one buffer line.
  - **Ctrl-F8**: Enters Configuration mode. The Configuration screen will appear.
  - **Ctrl-F9**: While in Configuration mode, return to the previous screen with History mode enabled.
  - **Ctrl-F10**: While in Configuration mode, return to the previous screen with On-Line mode enabled.
  - **Ctrl-F11**: Clears the history buffer. If you choose this option, a warning screen will appear. Press **Enter** to delete the history buffer, or **Escape** to cancel the action. The previous screen will reappear.
3. When finished, press **Ctrl-F10** to exit History mode and return to On-Line mode.

**DSRIQ-SRL module pinouts**

Table C.1 lists the pinouts for the DSRIQ-SRL module.

**Table C.1: DSRIQ-SRL Module Pinouts**

DB9-F Pin	Host Signal Name Description	Signal Flow	SRL Signal Name Description
1	DCD - Data Carrier Detect	Out of SRL	DTR - Data Terminal Ready
2	RXD - Receive Data	Out of SRL	TXD - Transmit Data
3	TXD - Transmit Data	In to SRL	RXD - Receive Data
4	DTR - Data Terminal Ready	In to SRL	DSR - Data Set Ready
5	GND - Signal Ground	N/A	GND - Signal Ground
6	DSR - Data Set Ready	Out of SRL	DTR - Data Terminal Ready
7	RTS - Request to Send	In to SRL	CTS - Clear to Send
8	CTS - Clear to Send	Out of SRL	RTS - Request to Send
9	N/C - Not Connected	N/A	N/C - Not Connected

## Appendix D: UTP Cabling

This appendix discusses various aspects of connection media. The performance of a DSR2035/8035 switching system depends on high quality connections. Poor quality or poorly installed or maintained cabling can diminish DSR system performance.

---

**NOTE:** This appendix is for information purposes only. Please consult with your local code officials and/or cabling consultants prior to any installation.

---

DSR2035/8035 switching systems utilize UTP cabling.

### UTP copper cabling

The following are basic definitions for the three types of UTP cabling that the DSR switch supports:

- CAT 5 UTP (4-pair) high performance cable consists of twisted pair conductors, used primarily for data transmission. The twisting of the pairs gives this cable some immunity from the infiltration of unwanted interference. CAT 5 cable is generally used for networks running at 10 or 100 Mbps.
- CAT 5E (enhanced) cable has the same characteristics as CAT 5, but is manufactured to somewhat more stringent standards.
- CAT 6 cable is manufactured to tighter requirements than CAT 5E cable. CAT 6 has higher measured frequency ranges and significantly better performance requirements than CAT 5E cable at the same frequencies.

### Wiring standards

There are two supported wiring standards for 8-conductor (4-pair) RJ-45 terminated UTP cable: EIA/TIA 568A and B. These standards apply to installations utilizing CAT 5, 5E and 6 cable specifications. The DSR2035/8035 switching system supports either of these wiring standards. Table D.1 describes the standards for each pin.

**Table D.1: UTP Wiring Standards**

Pin	EIA/TIA 568A	EIA/TIA 568B
1	white/green	white/orange
2	green	orange
3	white/orange	white/green
4	blue	blue
5	white/blue	white/blue
6	orange	green
7	white/brown	white/brown
8	brown	brown

## Cabling installation, maintenance and safety tips

The following is a list of important safety considerations that should be reviewed prior to installing or maintaining your cables:

- Keep all CAT 5 runs to a maximum of 10 meters each.
- Maintain the twists of the pairs all the way to the point of termination, or no more than one-half inch untwisted. Do not skin off more than one inch of jacket while terminating.
- If bending the cable is necessary, make it gradual with no bend sharper than a one inch radius. Allowing the cable to be sharply bent or kinked can permanently damage the cable's interior.
- Dress the cables neatly with cable ties, using low to moderate pressure. Do not over tighten ties.
- Cross-connect cables where necessary, using rated punch blocks, patch panels and components. Do not splice or bridge cable at any point.
- Keep CAT 5 cable as far away as possible from potential sources of EMI, such as electrical cables, transformers and light fixtures. Do not tie cables to electrical conduits or lay cables on electrical fixtures.
- Always test every installed segment with a cable tester. "Toning" alone is not an acceptable test.
- Always install jacks so as to prevent dust and other contaminants from settling on the contacts. The contacts of the jack should face up on the flush mounted plates, or left/right/down on surface mount boxes.
- Always leave extra slack on the cables, neatly coiled in the ceiling or nearest concealed location. Leave at least five feet at the work outlet side and 10 feet at the patch panel side.
- Choose either 568A or 568B wiring standard before beginning. Wire all jacks and patch panels for the same wiring scheme. Don't mix 568A and 568B wiring in the same installation.
- Always obey all local and national fire and building codes. Be sure to firestop all cables that penetrate a firewall. Use plenum rated cable where it is required.

## Appendix E: Technical Specifications

Table E.1 lists the technical specifications for the DSR2035/8035 switch.

**Table E.1: DSR2035/8035 Switch Product Specifications**

<b>Server Ports</b>	
Number	32 (DSR2035/8035 switches)
Types	DSRIQ-PS/2, DSRIQ-USB, DSRIQ-USB2, DSRIQ-USB2L, DSRIQ-VSN (Sun VGA), and DSRIQ-SRL modules
Connectors	RJ-45
Sync Types	Separate horizontal and vertical
Plug and Play	DDC2B
Video Resolution	640 x 480 @ 60 Hz (Local Port and Remote Port Minimum) 800 x 600 @ 75 Hz 960 x 700 @ 75 Hz 1024 x 768 @ 75 Hz 1280 x 1024 @ 75 Hz (Remote Port Maximum using a DSRIQ module)
Supported Cabling	4-pair UTP CAT 5 or CAT 6, 10 meters maximum length
<b>SETUP Port</b>	
Number	1
Type	Serial RS-232
Connector	RJ-45 with RJ-45 to DB-9 (female) adaptor
<b>Network Connection</b>	
Number	2
Type	Ethernet: IEEE 802.3 2002 Edition - 10BaseT, 100BaseT, 1000BaseT
Connector	RJ-45
<b>Local Port</b>	
Number	1
Type	PS/2, USB and VGA
Connectors	PS/2 MiniDIN, USB 2.0 and 15-pin D-Sub
<b>MODEM Port</b>	
Number	1
Type	Serial RS-232
Connectors	RJ-45 with RJ-45 to DB-9 (male) adaptor
<b>SPC Device Port</b>	
Number	2
Type	RJ-45

**Table E.1: DSR2035/8035 Switch Product Specifications (Continued)**

<b>USB Device Port</b>	
Number	5
Type	USB 2.0
<b>Dimensions</b>	
Height x Width x Depth	1.72 x 17.00 x 14.08 in; 1U form factor (4.37 x 43.18 x 35.75 cm)
Weight	10 lbs (4.5 kg) without cables
<b>Power Supply</b>	
AC-input Power	40 W maximum
AC-input Range	100 - 240 VAC
AC-input Current Rating	1.25 A
AC-input Cable	18 AWG three-wire cable, with a three-lead IEC-320 receptacle on the power supply end and a country-dependent plug on the power resource end
AC Frequency	50 - 60 Hz autosensing
<b>Ambient Atmospheric Condition Ratings</b>	
Temperature	32 to 104 degrees Fahrenheit (0 to 50 degrees Celsius) operating; -4 to 158 degrees Fahrenheit (-20 to 70 degrees Celsius) nonoperating
Humidity	10 - 95% noncondensing
<b>Safety and EMC Approvals and Markings</b>	
UL, FCC, cUL, ICES-003, CE, GS, VCCI, MIC, C-Tick, GOST	
<p>Safety certifications and EMC certifications for this product are obtained under one or more of the following designations: CMN (Certification Model Number), MPN (Manufacturer's Part Number) or Sales Level Model designation. The designation that is referenced in the EMC and/or safety reports and certificates are printed on the label applied to this product.</p>	

## Appendix F: Sun Advanced Key Emulation

Certain keys on a standard Type 5 (US) Sun keyboard can be emulated by key press sequences on a PS/2 keyboard. To enable Sun Advanced Key Emulation mode and use these keys, press and hold **Ctrl+Shift+Alt** and then press the **Scroll Lock** key. The *Scroll Lock* LED blinks. Use the indicated keys in Table F.1 as you would use the advanced keys on a Sun keyboard.

**Table F.1: Sun Key Emulation**

Sun Key (US)	PS/2 Key to Enable Sun Key Emulation
Compose	Application <sup>(1)</sup>
Compose	keypad
Power	F11
Open	F7
Help	Num Lock
Props	F3
Front	F5
Stop	F1
Again	F2
Undo	F4
Cut	F10
Copy	F6
Paste	F8
Find	F9
Mute	keypad /
Vol.+	keypad +
Vol.-	keypad -
Command (left) <sup>(2)</sup>	F12
Command (left) <sup>(2)</sup>	Win (GUI) left <sup>(1)</sup>
Command (right) <sup>(2)</sup>	Win (GUI) right <sup>(1)</sup>

(1)Windows 95 104-key keyboard.

(2)The Command key is the Sun Meta (diamond) key.



For example: For **Stop + A**, press and hold **Ctrl+Shift+Alt** and press **Scroll Lock**, then **F1 + A**.

These key combinations will work with the DSRIQ-USB module (if your Sun system comes with a USB port) as well as the Sun DSRIQ-VSN and DSRIQ-WSN modules. With the exception of **F12**, these key combinations are not recognized by Microsoft Windows. Using **F12** performs a Windows key press.

When finished, press and hold **Ctrl+Shift+Alt** and then press the **Scroll Lock** key to toggle Sun Advanced Key Emulation mode off.

## Special considerations for Japanese Sun USB and Korean Sun USB keyboards (DSRIQ-USB modules only)

Japanese Sun USB and Korean Sun USB keyboards assign usage IDs for certain keys that differ from standard USB usage IDs. If DSRIQ-USB modules are attached to your Sun servers, the Han/Zen and Katakana/Hiragana keys on Japanese Sun USB keyboards and Hangul and Hanja keys on Korean Sun USB keyboards must be accessed using alternate keystrokes.

Due to these keyboard-specific differences, keyboard mapping inconsistencies may be encountered when switching between target devices using Sun DSRIQ-VSN and DSRIQ-WSN modules and target devices using DSRIQ-USB modules. These keys function normally if your Sun servers are attached to the DSR2035/8035 switch using a DSRIQ-VSN or DSRIQ-WSN module.

Table F.2 lists the keyboard mapping that will take place when a DSRIQ-USB module is used in this setting.

**Table F.2: PS/2-to-USB Keyboard Mappings**

PS/2 Keyboard	USB Usage ID	Sun USB Keyboard	Korean Sun USB Keyboard	Japanese Sun USB Keyboard
Right-Alt	0xE6	AltGraph	Hangul	Katakana/Hiragana
Windows Application	0x65	Compose	Hanja	Compose
Hangul	0x90	N/A	N/A	N/A
Hanja	0x91	N/A	N/A	N/A
Katakana/Hiragana	0x88	N/A	N/A	Han/Zen
Han/Zen	0x35	`~	`~	N/A

## Appendix G: Technical Support

Our Technical Support staff is ready to assist you with any installation or operating issues you encounter with your Avocent product. If an issue should develop, follow the steps below for the fastest possible service.

**To resolve an issue:**

1. Check the pertinent section of the manual to see if the issue can be resolved by following the procedures outlined.
2. Check our web site at [www.avocent.com/support](http://www.avocent.com/support) to search the knowledge base or use the online service request.
3. Call the Avocent Technical Support location nearest you.

# INDEX

## Numerics

- 1000BaseT Ethernet **1, 5, 90**
- 100BaseT Ethernet **5, 90**
- 10BaseT Ethernet **5, 90**

## A

### access

- direct **21**
- DSRIQ module **23**
- OSCAR interface
  - Broadcast dialog box **34**
  - Commands dialog box **43**
  - Devices dialog box **29**
  - Flag dialog box **33**
  - Main dialog box **21**
  - Menu dialog box **31**
  - Names dialog box **27**
  - Screen Saver dialog box **38**
  - Setup dialog box **26**

### restrict **26**

- Screen Saver mode **25**

### secure, remote **1**

### target device **2**

### target devices **1**

### via modem **1, 2, 9**

### via network connection **2, 9**

add a user to the DSR switch database **78**

assign a device type **31**

## B

Benefits **1**

### Broadcast

- dialog box **35**
- Enable **42**
- OSCAR interface **26**

## C

cascade switch **26, 30**

CAT 5 patch cable **2, 8, 9, 10, 88, 89, 90**

Changing the Display Behavior **31**

### Commands

- Broadcast **35**
- Broadcast Enable **35, 42**
- dialog box **37, 43**
- Display Versions **42, 45**
- Reset PS/2 **42, 45**
- Scan Enable **38, 42**
- Scan mode **37**
- User Status **42, 43**

connect a DSRIQ module to a server **10**

connect and power up your DSR switch **9**

Console menu **75, 79, 80, 81**

- add a user **78**

Controlling the Status Flag **33**

## D

Device Modify Dialog Box **31**

### Devices

- dialog box **30**
- OSCAR interface **26**
- Setup Features **26**

### disconnect

- dialog box **44**

- DSRIQ modules **23**
- flag **33**
- target device **24**
- user **44**
- user connections **43**
- users **42, 43, 44, 45**
- Display Versions **42**
- DSR switch **1**
  - comes with **8**
  - Features **1**
  - Installation **5**
  - Network Configuration **3**
  - port **30**
  - Product Specifications **90**
- DSR switch database
  - add user **78**
  - remove user **78**
  - rename user **78**
- DSRIQ
  - module **7, 8, 9, 10, 53, 81, 84, 90**
    - connecting **10**
  - Selection dialog box **46**
  - Version dialog box **45, 47**
- DSRIQ port **7**
- DSRIQ-SRL module **2, 8, 10, 84, 90**
  - configuring **84, 86**
  - creating macros **86**
  - History mode **86**
  - modes **84**
  - pinouts **87**
- DSView Explorer
  - printing a window **52**
  - refreshing a window **52**
  - window areas **50**

- DSView software **2, 5, 6, 8, 10, 38, 39, 75, 77, 79, 81, 83, 84**
  - database **79**
  - illustrated **3**
  - Screen Saver password **39**
  - Secure mode **77**
  - security **79**
  - system **77**

## **E**

- Enable Debug Messages **79**
- Escape **25, 29, 35, 45**
- Example DSR Switch Configuration **3**

## **F**

- Features **1**
- Firmware Management **79**
- Flag
  - Color **34**
  - dialog box **33**
    - access **33**
  - Opaque **34**
  - OSCAR interface **26**
  - Transparent **34**

## **FLASH**

- Download **79**
- Upgrades **81**

## **H**

- History
  - mode **85, 86, 87**

## **I**

- Installation **5**
- Installation Overview **5**

**J**

Japanese Notice **ii**  
Japanese Sun USB Keyboards **93**

**K**

keyboard  
    dialog box **40**  
    OSCAR interface **26**  
Korean Sun USB Keyboards **93**  
KVM **5**  
    cable volume **2**  
    illustrated **7**  
    switch **1**  
KVM session. See *Video Viewer*

**L**

Local country power cord **8**  
Local Port Operation **21**

**M**

Macros (Video Viewer)  
    about **72**  
    sending **72**  
Main Dialog Box **22**  
Menu  
    OSCAR interface **26**  
modem **1, 2, 5, 6, 8, 9, 83**  
    illustrated **3**  
    port **1, 83**  
Mouse settings  
    aligning in the Video Viewer **71**

**N**

Name Modify Dialog Box **29**

## Names

    dialog box **26, 28**  
network speed **77**  
null modem cable **10, 81**

**O**

## OSCAR interface

    Alt **25**  
    Broadcast dialog box **34, 35**  
    change the display order **31**  
    Commands dialog box **37, 43**  
    Commands menu **43**  
    Device Modify dialog box **31**  
    Devices dialog box **29, 30**  
    Disconnect dialog box **44**  
    DSRIQ Selection dialog box **46**  
    DSRIQ Version dialog box **47**  
    Enter **25**  
    Escape **25**  
    Flag dialog box **33**  
    Keyboard dialog box **40**  
    Main dialog box **21**  
    menus **26**  
    Name Modify dialog box **29**  
    Names dialog box **27, 28**  
    Navigating **25**  
    Print Screen **25**  
    Scan dialog box **36**  
    screen delay **24**  
    Screen Saver dialog box **38**  
    set a Screen Delay Time **31, 32**  
    Single-click, Enter **25**  
    User Status dialog box **44**  
    Version dialog box **46**

**P**

Point-to-Point Protocol **5**

Position Flag **34**

PPP **5**

Print Screen **25**

    OSCAR interface **26**

procedure

    To access the OSCAR interface Broadcast dialog box **34**

    To access the OSCAR interface Commands dialog box **43**

    To access the OSCAR interface Devices dialog box **29**

    To access the OSCAR interface Flag dialog box **33**

    To access the OSCAR interface Menu dialog box **31**

    To access the OSCAR interface Names dialog box **27**

    To access the OSCAR interface Screen Saver dialog box **38**

    To access the OSCAR interface Setup dialog box **26**

    To add a user to the DSR switch database **78**

    To add target devices to the scan list **36**

    To assign a device type **31**

    To assign names to target devices **28**

    To broadcast to selected target devices **35**

    To cancel scan mode **38**

    To choose the display order of target devices **32**

    To configure a DSRIQ-SRL module **86**

    To configure network settings using the Console menu **75**

    To configure the OSCAR interface screen delay **24**

    To connect a DSRIQ module to a serial device **10**

    To connect a DSRIQ module to a server **10**

    To connect and power up your DSR switch **9**

    To create a DSRIQ-SRL module macro **86**

    To determine how the Status flag is displayed **34**

    To disconnect a user **44**

    To disconnect from a target device **24**

    To display version information **45**

    To exit screen saver mode and log in to the local port **39**

    To immediately turn on the screen saver **39**

    To list target devices alphabetically by name **29**

    To remove a target device from the scan list **37**

    To remove a user from the DSR switch database **78**

    To rename a user in the DSR switch database **78**

    To reset the PS/2 mouse and keyboard values **45**

    To select target devices **23**

    To select the previous target device **24**

    To set a Screen Delay Time for the OSCAR interface **32**

    To set the keyboard country code for Sun servers **40**

    To set the Screen Saver options **39**

    To soft switch to a target device **24**

    To start the scan mode **37**

    To turn broadcasting off **36**

    To upgrade the DSR switch firmware using the Console menu **81**

    To upgrade the DSR switch firmware using the DSView software **81**

    To use History mode **87**

    To view current user connections **43**

**R**

Rack mounting brackets **8**

Reduce cable bulk **2**

remove a user from the DSR switch database **78**

rename a user in the DSR switch database **78**

Requirements

Video Viewer **59**

Reset Appliance **80**

Reset Certificates **79**

Reset PS/2 **42**

Restore Factory Defaults **80**

## **S**

Safety Precautions **4**

Scan

dialog box **36, 37**

Enable **38, 42**

mode **36, 37**

OSCAR interface **26**

Screen Saver **26**

Secure Mode **79**

Sessions

Video Viewer session time-out **60**

Setting up your network **8**

Setup Dialog Box **27**

Simple point and click access to any server **2**

SPC devices

power controlling from the Video Viewer **56**

SPC port **1, 9, 90**

SPC power control device **1, 6, 8, 9, 90**

illustrated **7**

## **T**

target devices

selecting **23**

Technical Support **94**

Terminal Applications menu **84, 85, 86**

Terminal Operations **59, 75**

## **U**

upgrade the DSR switch firmware **81**

User Connections

Viewing and Disconnecting **43**

User Status **42**

User Status Dialog Box **44**

Using Scan Mode **36**

## **V**

Verifying the Connections **11**

Version Dialog Box **46**

Video Viewer

about **59**

adjusting color depth **65**

adjusting mouse options **69**

adjusting the view **64, 66**

aligning the mouse **71**

capturing a window **72**

changing the window resolution **63**

closing a session **73**

enabling scaling types **65**

enabling/disabling full screen mode **65**

launching a KVM session **60**

macros **72**

minimum requirements **59**

refreshing the screen **64**

selecting the cursor type **69**

session time-out **60**

specifying a toolbar hide time **63**

specifying scaling **70**

using keyboard pass-through **71**

window features **61**

Viewing User Connections **43**

virtual media **23, 41**

dialog box **41**

setting options **41**







**Avocent®**

The Power of Being There®

For Technical Support:

[www.avocent.com/support](http://www.avocent.com/support)

Avocent Corporation  
4991 Corporate Drive  
Huntsville, Alabama 35805-6201 USA  
Tel: +1 256 430 4000  
Fax: +1 256 430 4031

Avocent Asia Pacific  
Singapore Branch Office  
100 Tras Street, #15-01  
Amara Corporate Tower  
Singapore 079027  
Tel: +656 227 3773  
Fax: +656 223 9155

Avocent Canada  
20 Mural Street, Unit 5  
Richmond Hill, Ontario  
L4B 1K3 Canada  
Tel: +1 877 992 9239  
Fax: +1 877 524 2985

Avocent International Ltd.  
Avocent House, Shannon Free Zone  
Shannon, County Clare, Ireland  
Tel: +353 61 715 292  
Fax: +353 61 471 871

Avocent Germany  
Gottlieb-Daimler-Straße 2-4  
D-33803 Steinhagen  
Germany  
Tel: +49 5204 9134 0  
Fax: +49 5204 9134 99